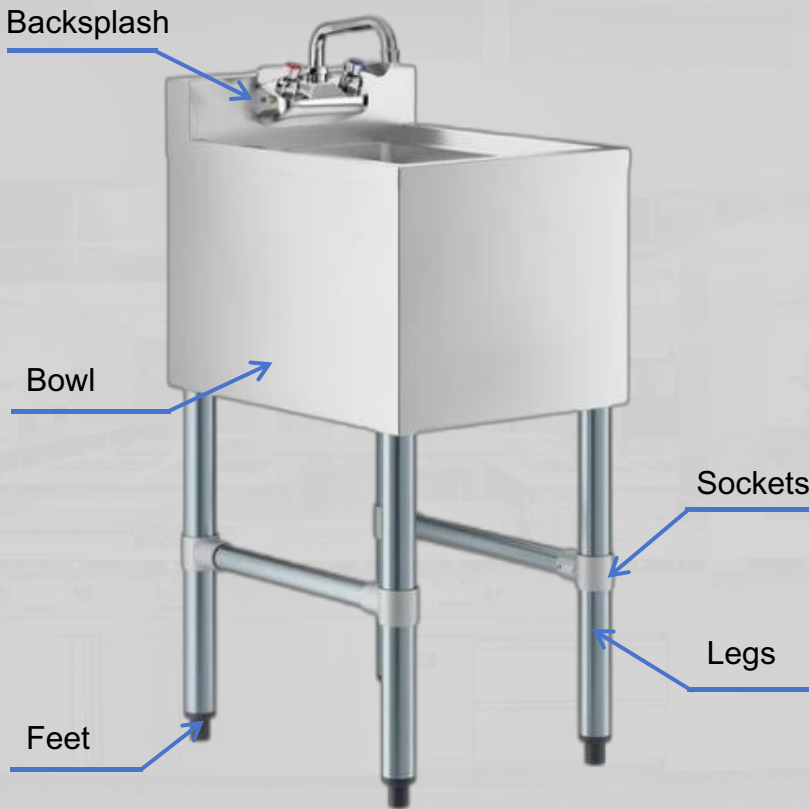


1 Bowl Underbar Sink



Top Structure

- Sound-deadened between top and channels
- Reinforced hat channel under top
- Square top edge with safely-use care



Leg Support

- Round rube structure legs with adjustable feet, castors available
- 84" and 96" models have 6 legs for extra strength



Package

- Shipped knocked-down for saving space
- Standard exporting carton package



Note

- All products support customisation, we will meet your many custom needs!

Customized services available

1. Customizable material

Optional material for topsurface	<input type="checkbox"/> 304 Stainless Steel
	<input type="checkbox"/> 430 Stainless Steel
	<input type="checkbox"/> Galvanized sheet
Optional material for legs	<input type="checkbox"/> 304 Stainless Steel
	<input type="checkbox"/> 430 Stainless Steel
	<input type="checkbox"/> Galvanized sheet

2. Feet accessories style

<input type="checkbox"/> Silicone bullet feet
<input type="checkbox"/> Metal bullet feet
<input type="checkbox"/> Casters

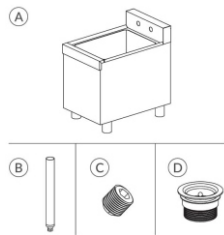
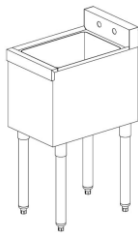
3. Sockets style

<input type="checkbox"/> Aluminum castings
<input type="checkbox"/> Integral welding

# Underbar Sink Series



## 1 Bowl Underbar Sink



Item No.	Length"	Width"	Height"	Spout Length	Bowl Depth	Backsplash Height	Bowl Front to back	Bowl left to right	Gauge
US1-141833	14.5"	18 3/4"	33"	6"	5"	3"	14"	10"	18-Gauge
US1-121833	12"	18 3/4"	33"	/	10"	3"	14"	10"	18-20Gauge

## 1 Bowl Underbar Sink with Faucet and Drainboard



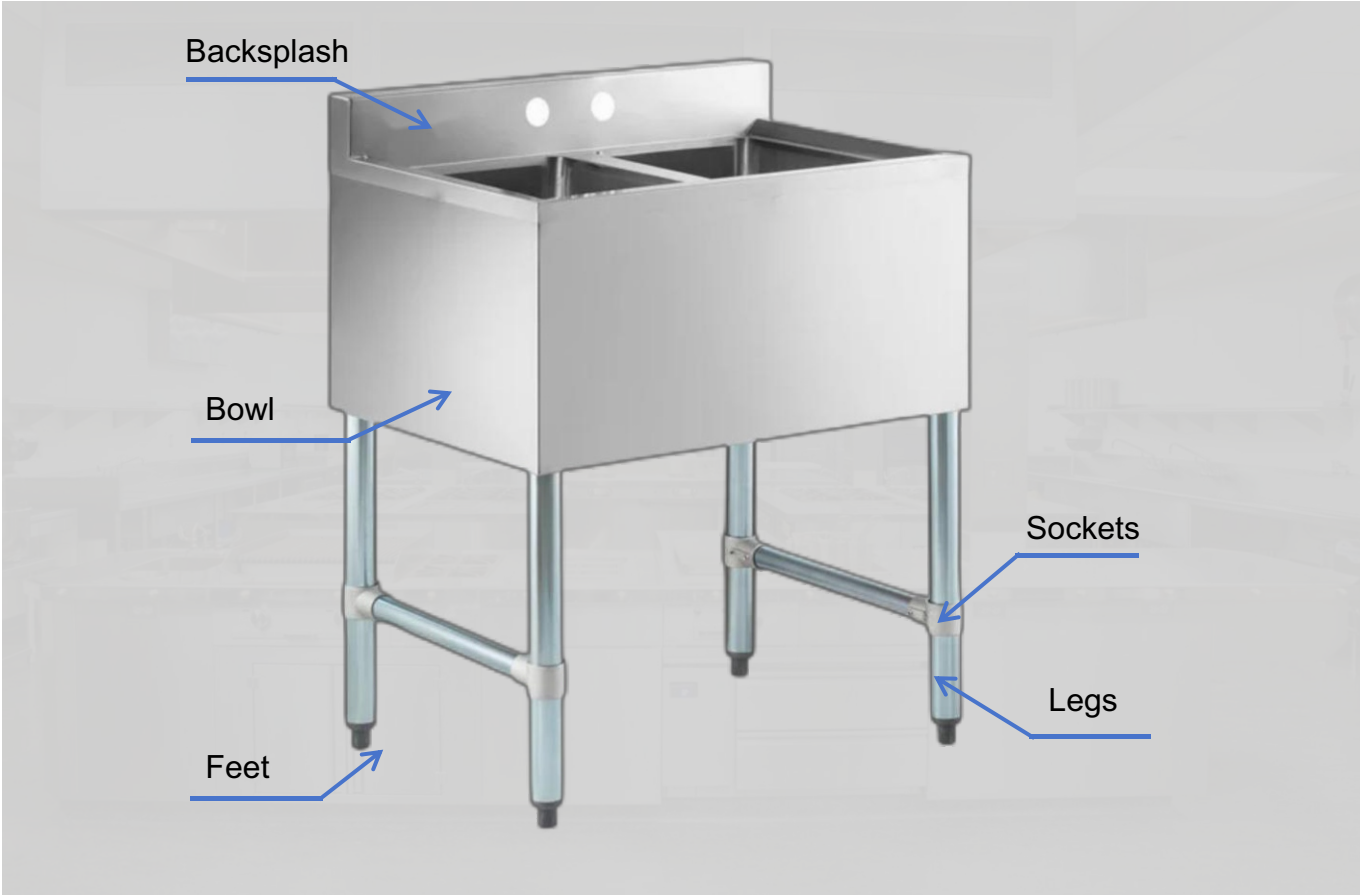
Item No.	Length"	Width"	Height"	Drainboard Length	BowlDepth	Backsplash Height	Backsplash	Bowl Front to Back	Bowl Left to Right
US1-241833	24"	18 3/4 "	33"	12"	10"	3 "	With Backsplash	14"	10"

## 1 Bowl Underbar Sink with Faucet and 2 Drainboards



Item No.	Length"	Width"	Height"	BowlDepth	Backsplash Height	Backsplash	Drainboard Location	Gauge
US1-361833	36"	18 3/4 "	33"	10"	3"	With Backsplash	Left/Right Drainboard	16-18 Gauge

2 Bowl Underbar Sink



Top Structure

- Sound-deadened between top and channels
- Reinforced hat channel under top
- Square top edge with safely-use care



Package

- Shipped knocked-down for saving space
- Standard exporting carton package



Leg Support

- Round rube structure legs with adjustable feet, castors available
- 84" and 96" models have 6 legs for extra strength



Note

- All products support customisation, we will meet your many custom needs!

Customized services available

1. Customizable material

Optional material for topsurface	<input type="checkbox"/> 304 Stainless Steel
	<input type="checkbox"/> 430 Stainless Steel
	<input type="checkbox"/> Galvanized sheet
Optional material for legs	<input type="checkbox"/> 304 Stainless Steel
	<input type="checkbox"/> 430 Stainless Steel
	<input type="checkbox"/> Galvanized sheet

2. Feet accessories style

- ☐ Silicone bullet feet
- ☐ Metal bullet feet
- ☐ Casters

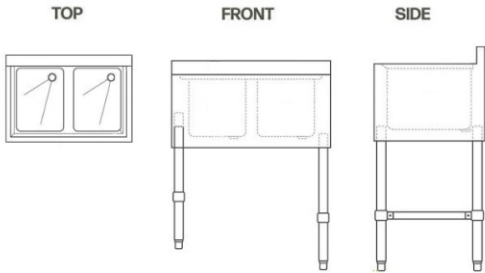
3. Sockets style

- ☐ Aluminum castings
- ☐ Integral welding

# Underbar Sink Series



## 2 Bowl Underbar Sink



Item No.	Length"	width"	Height"	Bowl Depth	Backsplash Height	Backsplash	Bowl Front to Back	Gauge
US2-261833	26"	18 3/4 "	33"	10"	3"	With Backsplash	10"	18-Gauge
US2-262133	26 1/2 "	21"	33"	10"	3"	With Backsplash	10"	18-20 Gauge

## 2 Bowl Underbar Sink with Faucet and Drainboard



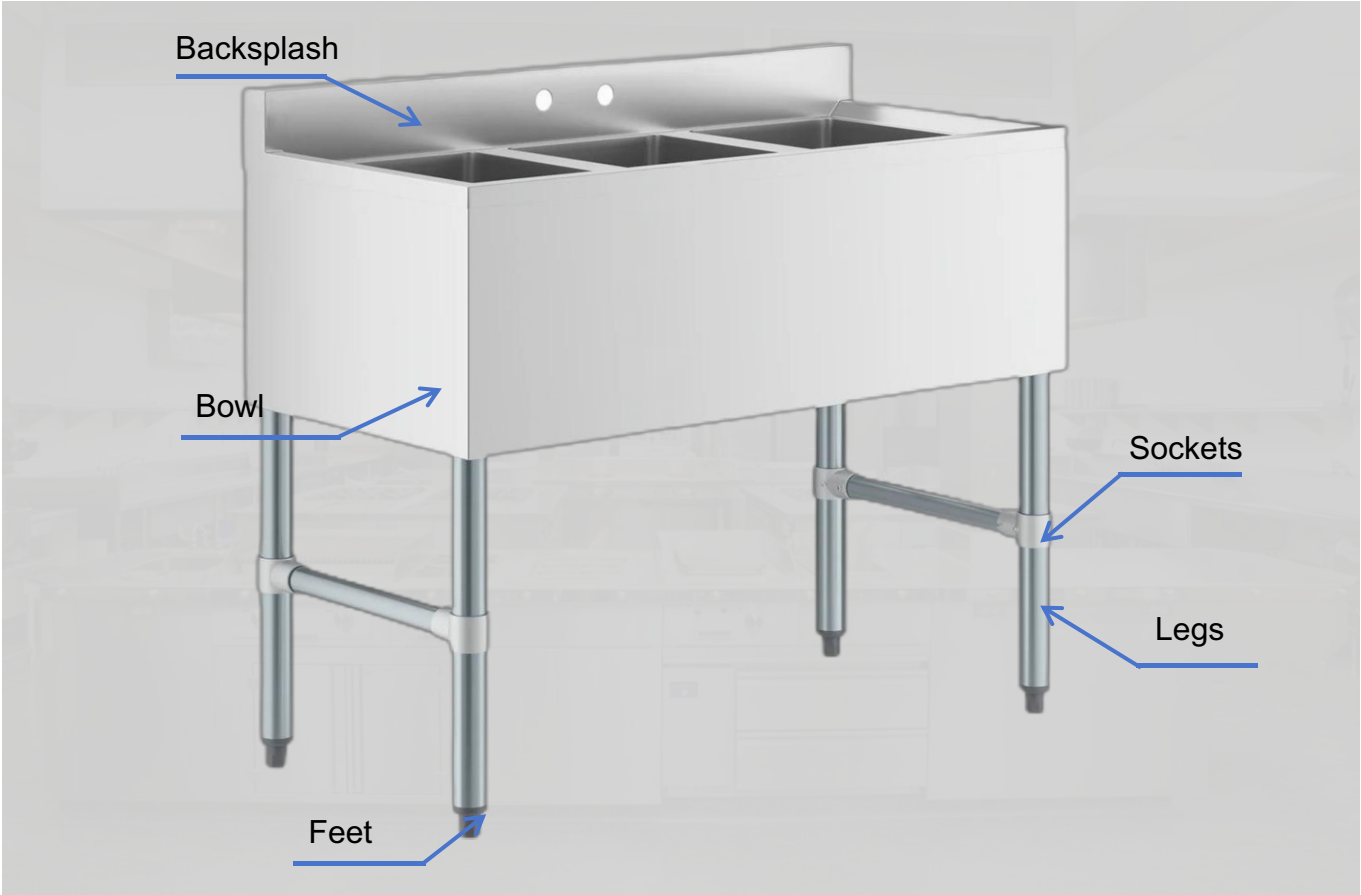
Item No.	Length"	width"	Height"	Bowl Depth	Backsplash Height	Backsplash	Bowl Front to Back	Gauge
US2-361812	36"	18 3/4"	12"	10"	3"	With Backsplash	10"	18-Gauge

## 2 Bowl Underbar Sink with Faucet and 2 Drainboards



Item No.	Length"	width"	Height"	Bowl Depth	Backsplash Height	Backsplash	Bowl Front to Back	Gauge
US2-481833	48"	18 3/4"	33"	33"	3"	With Backsplash	10"	18-Gauge

3 Bowl Underbar Sink



Top Structure

- Sound-deadened between top and channels
- Reinforced hat channel under top
- Square top edge with safely-use care



Package

- Shipped knocked-down for saving space
- Standard exporting carton package



Leg Support

- Round rube structure legs with adjustable feet, castors available
- 84" and 96" models have 6 legs for extra strength



Note

- All products support customisation, we will meet your many custom needs!

Customized services available

1. Customizable material

Optional material for topsurface	<input type="checkbox"/> 304 Stainless Steel
	<input type="checkbox"/> 430 Stainless Steel
	<input type="checkbox"/> Galvanized sheet
Optional material for legs	<input type="checkbox"/> 304 Stainless Steel
	<input type="checkbox"/> 430 Stainless Steel
	<input type="checkbox"/> Galvanized sheet

2. Feet accessories style

- ☐ Silicone bullet feet
- ☐ Metal bullet feet
- ☐ Casters

3. Sockets style

- ☐ Aluminum castings
- ☐ Integral welding

# Underbar Sink Series



## 3 Bowl Underbar Sink



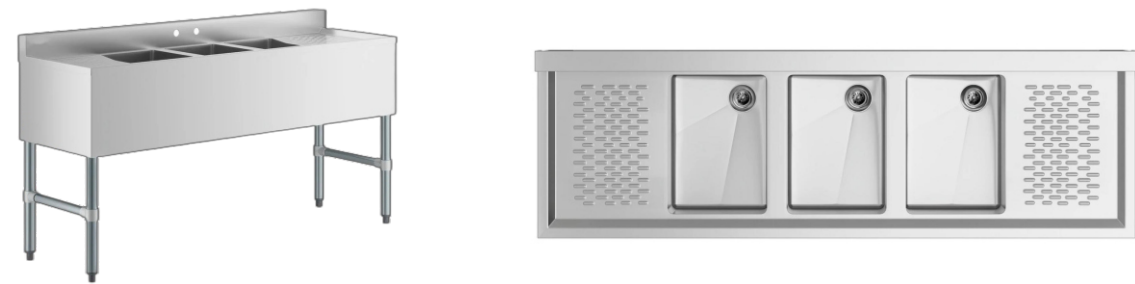
Item No.	Length"	width"	Height"	Bowl Depth	Backsplash Height	Backsplash	Bowl Front to Back	Gauge
US3-381830	38"	18 3/4"	30"	10"	3"	With Backsplash	10"	18-20 Gauge
US3-381833	38 1/2"	18 3/4"	33"	10"	3"	With Backsplash	10"	18-Gauge

## 3 Bowl Underbar Sink with Faucet and Drainboard



Item No.	Length"	width"	Height"	Bowl Depth	Backsplash Height	Backsplash	Bowl Front to Back	Gauge
US3-481833	48"	18 3/4"	33"	10"	3"	With Backsplash	10"	18-Gauge

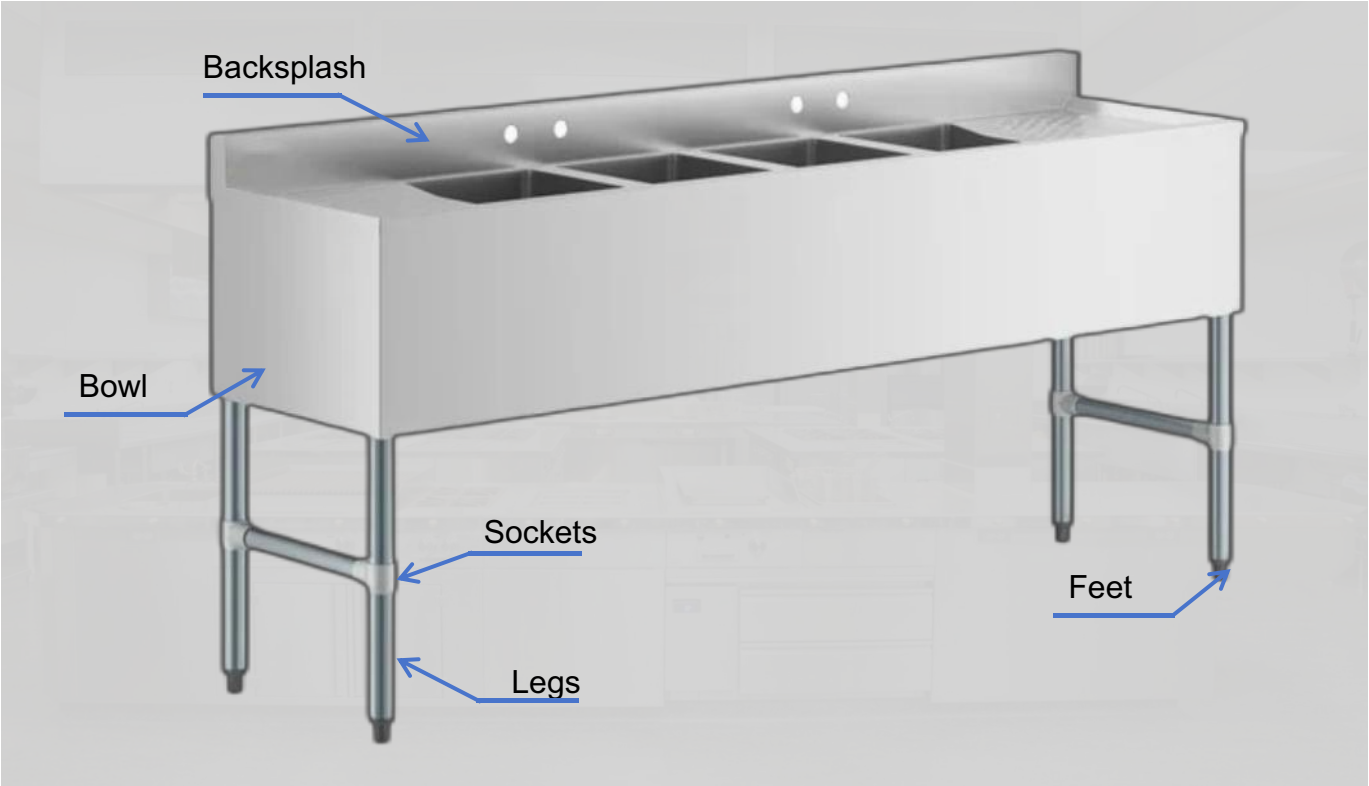
## 3 Bowl Underbar Sink with Faucet and 2 Drainboards



Item No.	Length"	width"	Height"	Bowl Depth	Backsplash Height	Backsplash	Bowl Front to Back	Gauge
US3-601833	60"	18 3/4"	33"	10"	3"	With Backsplash	10"	18-Gauge
US3-602133	60"	21"	33"	10"	3"	With Backsplash	10"	18-Gauge
US3-721833	72"	18 3/4"	33"	10"	3"	With Backsplash	10"	18-Gauge
US3-722133	72"	21"	33"	10"	3"	With Backsplash	10"	18-Gauge



4 Bowl Underbar Sink



Top Structure

- Sound-deadened between top and channels
- Reinforced hat channel under top
- Square top edge with safely-use care



Leg Support

- Round tube structure legs with adjustable feet, castors available
- 84" and 96" models have 6 legs for extra strength



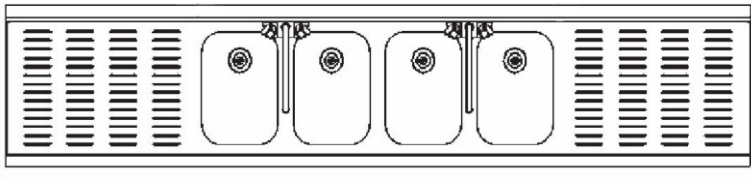
Package

- Shipped knocked-down for saving space
- Standard exporting carton package



Note

- All products support customisation, we will meet your many custom needs!



Customized services available

1. Customizable material

- Optional material for topsurface**
- ☐ 304 Stainless Steel
  - ☐ 430 Stainless Steel
  - ☐ Galvanized sheet

- Optional material for legs**
- ☐ 304 Stainless Steel
  - ☐ 430 Stainless Steel
  - ☐ Galvanized sheet

2. Feet accessories style

- ☐ Silicone bullet feet
- ☐ Metal bullet feet
- ☐ Casters

3. Sockets style

- ☐ Aluminum castings
- ☐ Integral welding

Item No.	Length"	width"	Height"	Drainboard Length	Bowl Depth	Backsplash Height	Backsplash	Bowl Front to Back	Gauge
US4-721833	72"	18 3/4"	33"	13"	10"	With Backsplash	14"	10"	18-Gauge
US4-722133	72"	21"	33"	13"	10"	With Backsplash	14"	10"	18-Gauge
US4-842133	84"	21"	33"	19"	10"	With Backsplash	14"	10"	18-Gauge
US4-962033	96"	20"	33 1/2"	24 1/2"	10"	With Backsplash	14"	10"	18-Gauge