



Xinhe Stainless Steel Products Co., Ltd.



**Stainless  
Steel Sanitary Ware**

公 共 产 品 系 列





# ABOUT US

Xinhe Stainless Steel Products CO.,LTD founded at 1990's ,specializing in custom made and standard stainless steel products which included commercial kitchenware,commercial and domestic sink and customized public facility project.

Backing up with our advanced innovating and developing skills, Xinhe spares on effort the development and Innovation of stainless steel kitchenware industry and non-standard stainless steel projects.

In the past 29 years, Xinhe is been always one of the leading factories in the industry and enjoying a high prestige of founder qualification.

Xinhe is located in Jiangmen City, Guangdong Province. Our high stand well equipped plant is 38000 m<sup>2</sup> in size, 200 professional staff made an excellent team.

Our products have been exported to all over the world. We had obtained the international certificates , included ISO9001, CUPC, NSF, CE ,WATERMARK and so on.









医疗产品系列  
Medical Products Series

12

12-01

# 医疗产品系列 Medical Products Series



KC-12060

Sluice Sinks With Cistern

Bacteriostatic 304 Stainless Steel

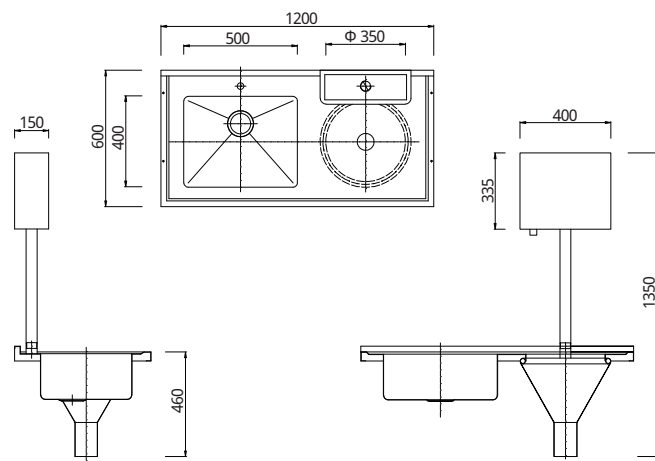
Outer Size: 1200 X 600 X 1350

Bowl Size:  $\Phi 350$  / 500 X 400 X 200

Thickness: Optional 1.2 / 1.5

Hairline Finished

Custom And Standard Lengths Available



PWB199-18065117

Sluice Sinks

Bacteriostatic 304 Stainless Steel

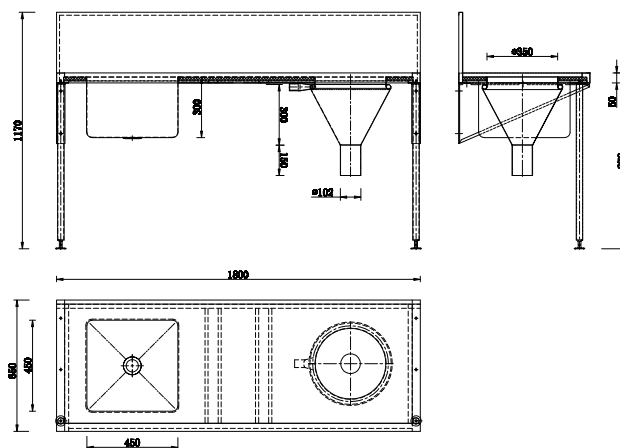
Outer Size: 1800 X 650 X 1170

Bowl Size:  $\Phi 350$

Thickness: Optional 1.2 / 1.5

Hairline Finished

Custom And Standard Lengths Available



PQ219

Sluice Sinks With Cistern

Bacteriostatic 304 Stainless Steel

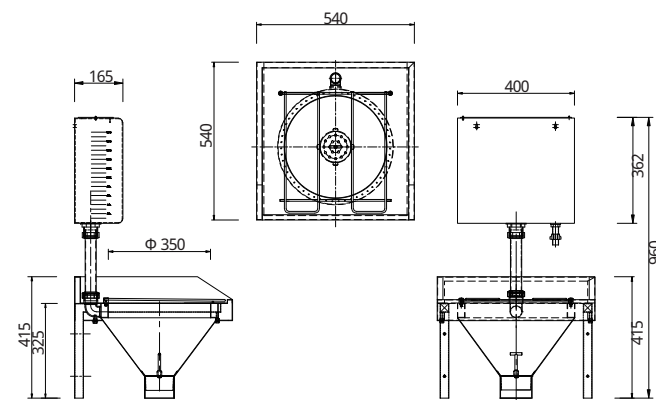
Outer Size: 540 X 540 X 960

Bowl Size:  $\Phi 350$

Thickness: Optional 1.2 / 1.5

Hairline Finished

Custom And Standard Lengths Available





PQ377

## Sluice Sinks With Cistern

## Bacteriostatic 304 Stainless Steel

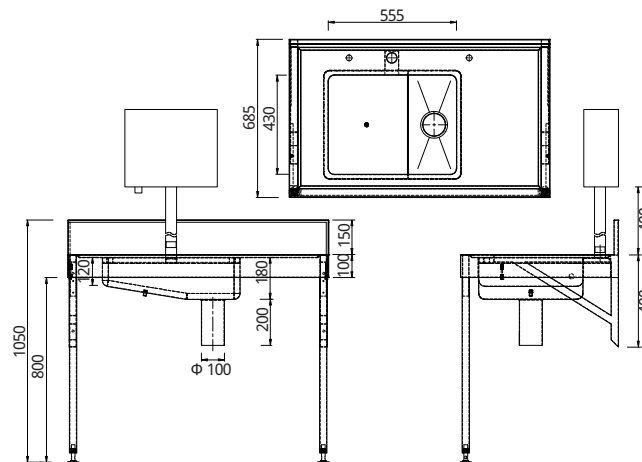
Outer Size: 1200 X 600 X 1350

Bowl Size: 555 X 430 X 180

Thickness: Optional 1.2 / 1.5

Hairline Finished

Custom And Standard Lengths Available



PWT106-1405566

## Scrub Sink

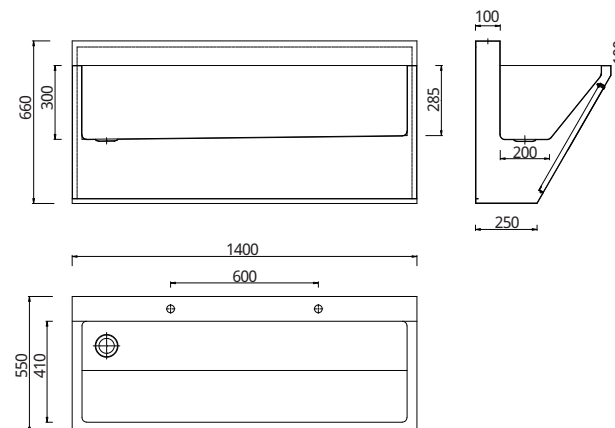
Bacteriostatic 304 Stainless Steel

Outer Size: 1400 X 550 X 660

Thickness: Optional 1.2 / 1.5

Hairline Finished

Custom And Standard Lengths Available



PWT34-705283

## Scrub Sink

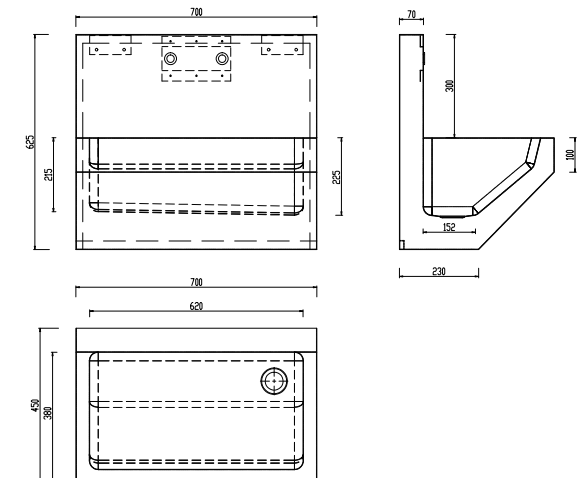
## Bacteriostatic 304 Stainless Steel

Outer Size: 700 X 520 X 830

Thickness: Optional 1.2 / 1.5

Hairline Finished

Custom And Standard Lengths Available



12-03

## 医疗产品系列 Medical Products Series



PWB111-1205590

Scrub Sink

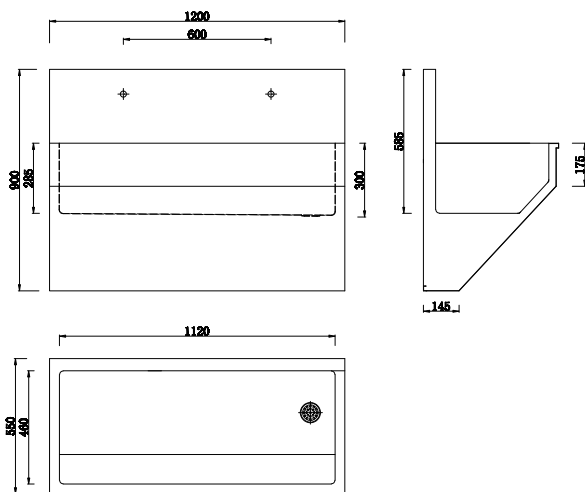
Bacteriostatic 304 Stainless Steel

Outer Size: 1200 X 550 X 900

Thickness: Optional 1.2 / 1.5

Hairline Finished

Custom And Standard Lengths Available



M03-21073

Knee Operated Hand Wash Trough

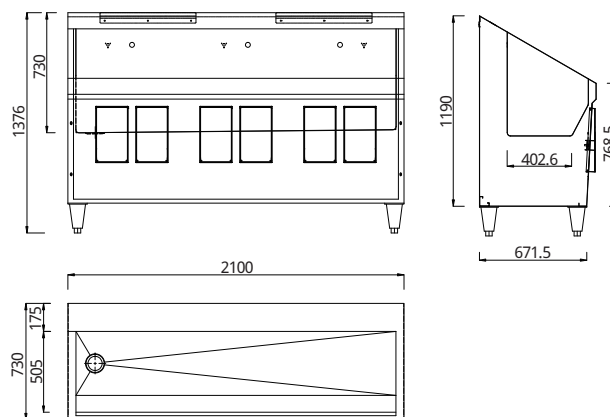
Bacteriostatic 304 Stainless Steel

Outer Size: 2100 X 730 X 1376

Thickness: Optional 1.2 / 1.5

Hairline Finished

Custom And Standard Lengths Available



PWT158-20065180

Operating Room Hand Wash Trough

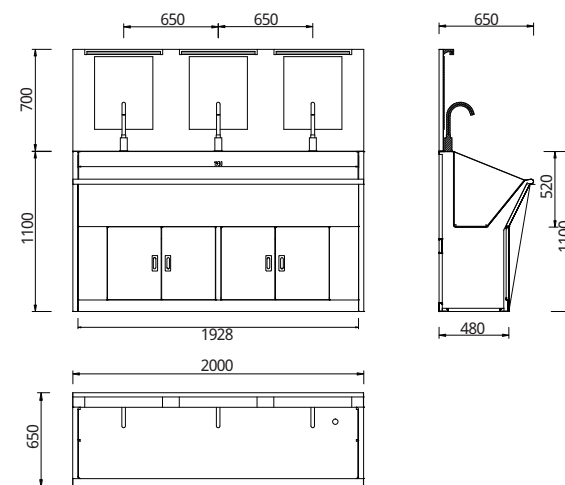
Bacteriostatic 304 Stainless Steel

Outer Size: 2000 X 650 X 1800

Thickness: Optional 1.2 / 1.5

Hairline Finished

Custom And Standard Lengths Available

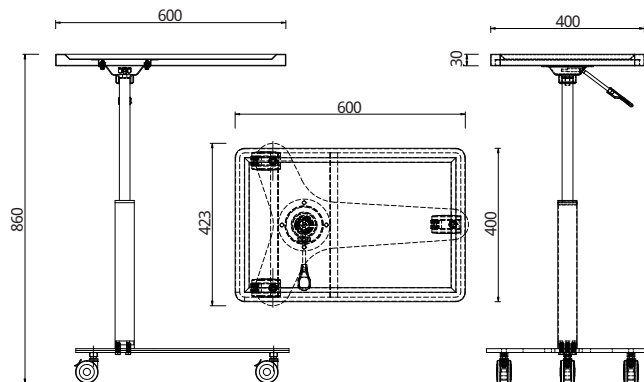






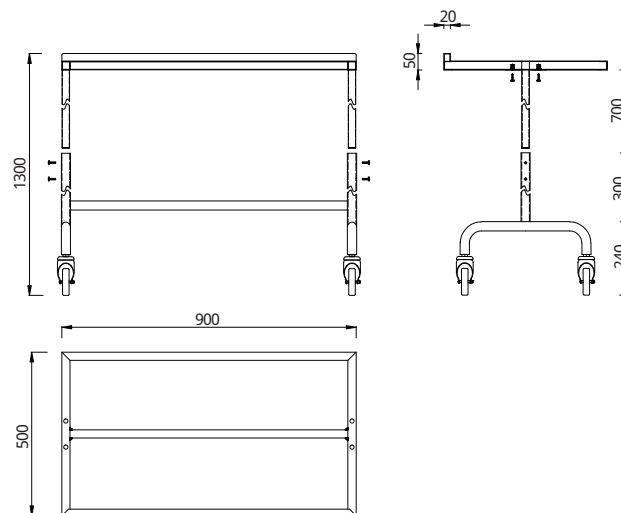
PQ217

Mayo Table(Adjustable Height)  
Bacteriostatic 304 Stainless Steel  
Outer Size: 600 X 423 X 860  
Thickness: Optional 1.2 / 1.5  
Hairline Finished  
Custom And Standard Size Available



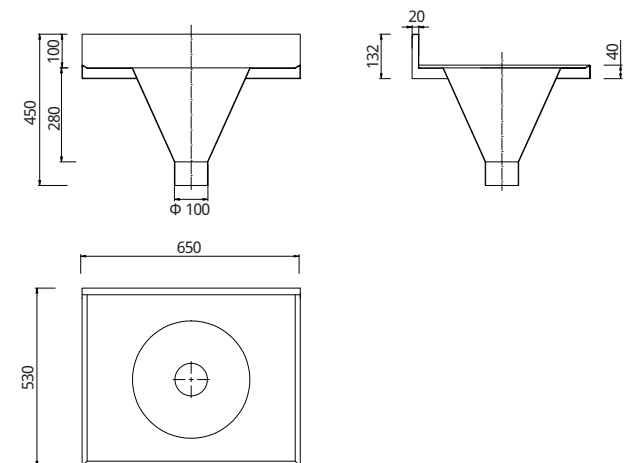
Removable Table

Removable Table  
Bacteriostatic 304 Stainless Steel  
Outer Size: 900 X 500 X 1300  
Thickness: Optional 1.2 / 1.5  
Hairline Finished  
Custom And Standard Lengths Available



Q65X53X28-18

Flushing Sink  
Bacteriostatic 304 Or 316 Stainless Steel  
Outer Size: 650 X 530 X 450  
Thickness: Optional 1.2 / 1.5  
Hairline Finished  
Suit Bench Top Or Wall Mounting



12-05

# 医疗产品系列 Medical Products Series



PQ202

Flushing Sink With Grill

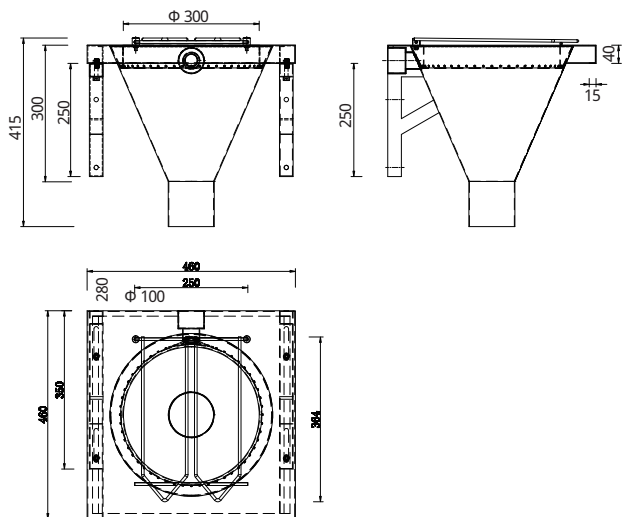
Bacteriostatic 304 Stainless Steel

Outer Size: 460 X 460 X 415

Thickness: Optional 1.2 / 1.5

Hairline Finished

Suit Bench Top Or Wall Mounting



PQ277

Flushing Sink

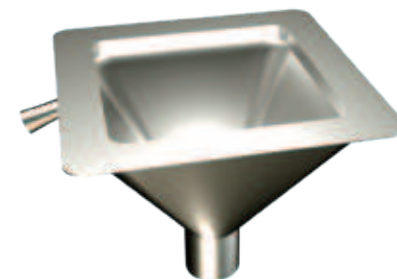
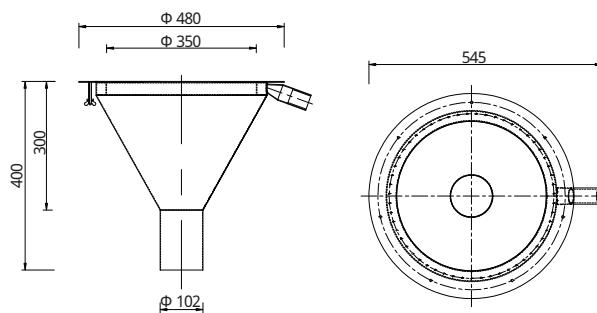
Bacteriostatic 304 Or 316 Stainless Steel

Outer Size:  $\Phi 480$  X 400

Thickness: Optional 1.2 / 1.5

Hairline Finished

Suit Bench Top Or Wall Mounting



PQ288

Flushing Sink

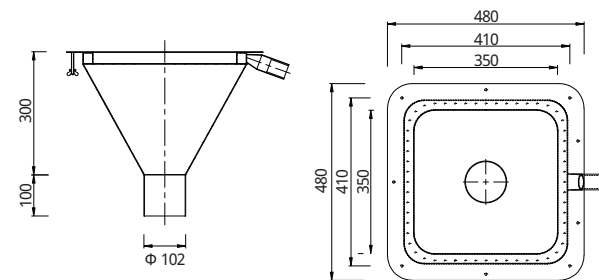
Bacteriostatic 304 Or 316 Stainless Steel

Outer Size: 480 X 480 X 400

Thickness: Optional 1.2 / 1.5

Hairline Finished

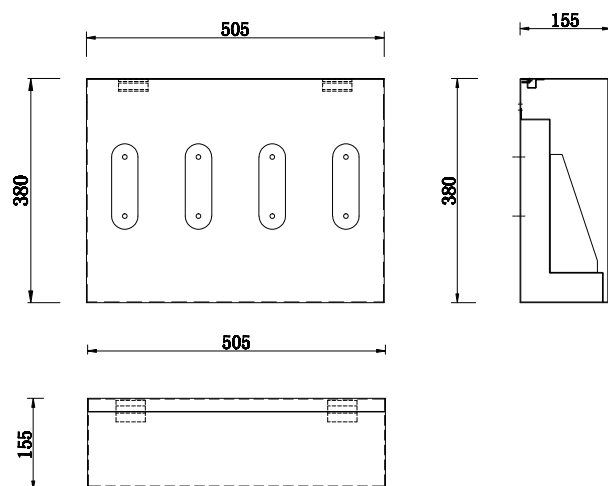
Suit Bench Top Or Wall Mounting





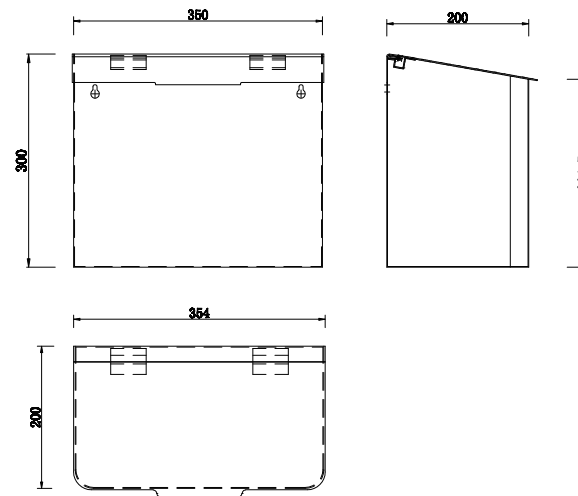
PQ315

Glovebox  
Bacteriostatic 304 Stainless Steel  
Outer Size: 505 X 155 X 380  
Thickness: Optional 1.2 / 1.5  
Hairline Finished  
Custom And Standard Size Available



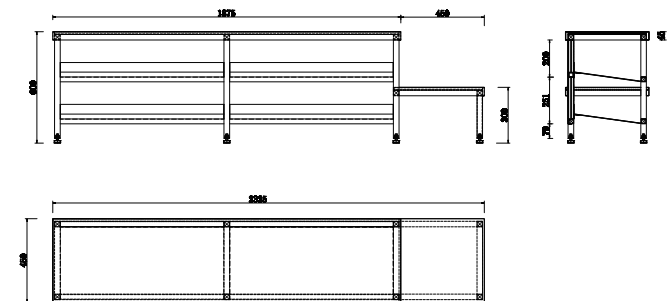
PQ310

Shoebox  
Bacteriostatic 304 Stainless Steel  
Outer Size: 354 X 200x 300  
Thickness: Optional 1.2 / 1.5  
Hairline Finished  
Custom And Standard Size Available



PQ354

Step Over Bench  
Bacteriostatic 304 Or 316 Stainless Steel  
Outer Size: 2325 X 450 X 600  
Thickness: Optional 1.2 / 1.5  
Hairline Finished  
Custom And Standard Size Available



12-07

## 医疗产品系列 Medical Products Series



PQ316

Step Over Bench

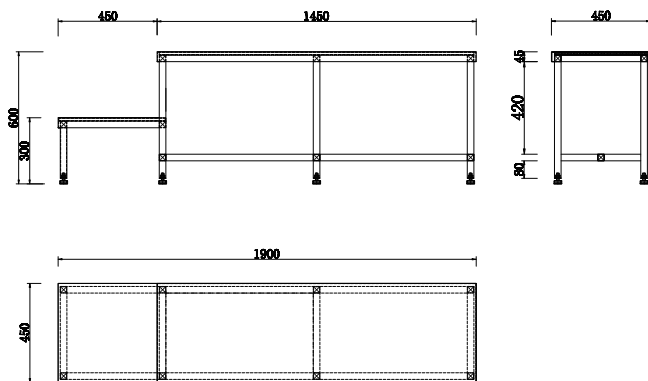
Bacteriostatic 304 Or 316 Stainless Steel

Outer Size: 1900 X 450 X 600

Thickness: Optional 1.2 / 1.5

Hairline Finished

Custom And Standard Size Available



PQ321

Step Over Bench

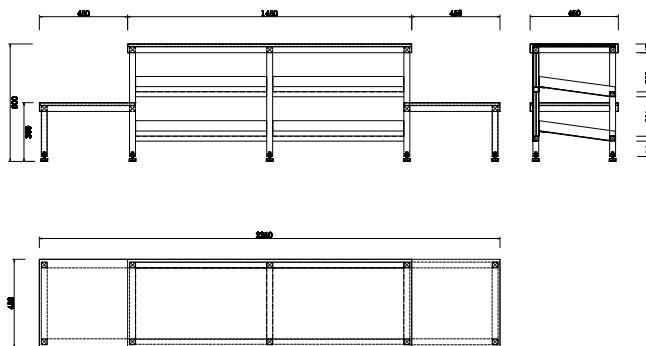
Bacteriostatic 304 Or 316 Stainless Steel

Outer Size: 2350 X 450 X 600

Thickness: Optional 1.2 / 1.5

Hairline Finished

Custom And Standard Size Available



PQ121

Stainless Steel Bench

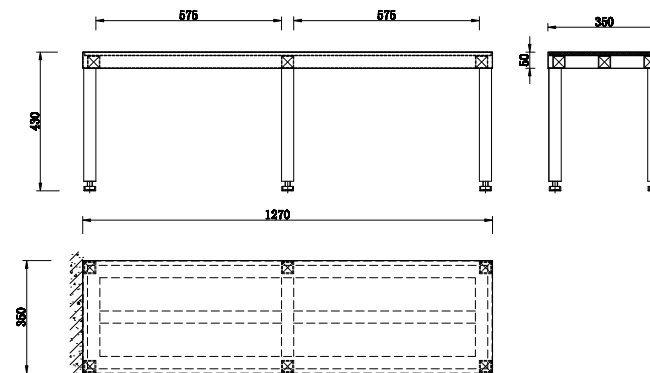
Bacteriostatic 304 Stainless Steel

Outer Size: 1270 X 350 X 430

Thickness: Optional 1.2

Hairline Finished

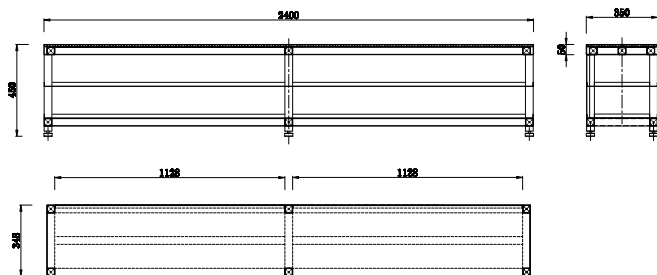
Custom And Standard Size Available





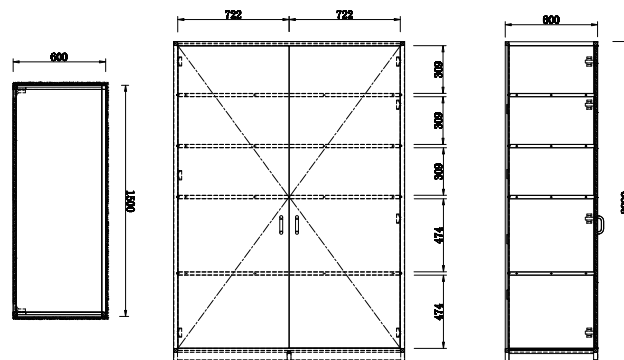
PQ76

Stainless Steel Bench  
Bacteriostatic 304 Stainless Steel  
Outer Size: 2400 X 350 X 450  
Thickness: Optional 1.2  
Hairline Finished  
Custom And Standard Size Available



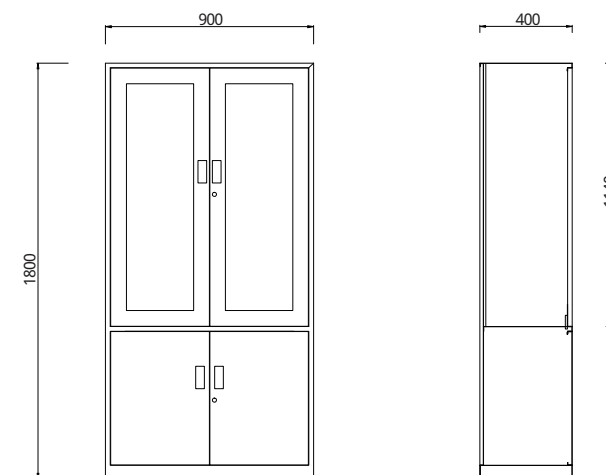
PQ326

Stainless Steel Cupboard  
Bacteriostatic 304 Stainless Steel  
Outer Size: 1500 X 600 X 2090  
Thickness: Optional 1.2 / 1.5  
Hairline Finished  
Custom And Standard Size Available



File Cabinet

File Cabinet  
Bacteriostatic 304 Stainless Steel  
Outer Size: 900 X 400 X 1800  
Thickness: Optional 1.2 / 1.5  
Hairline Finished  
Custom And Standard Size Available

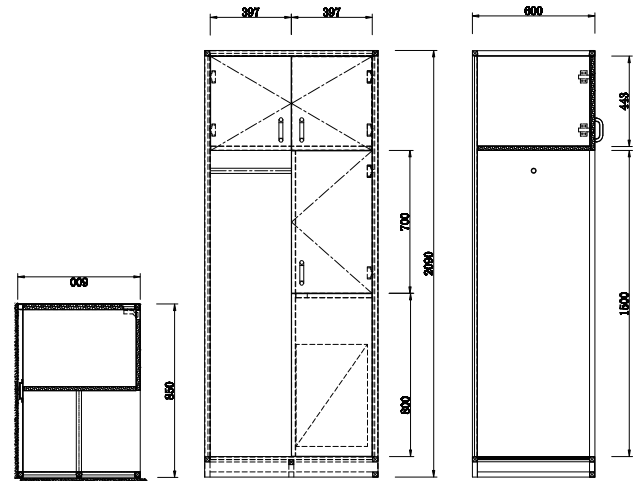






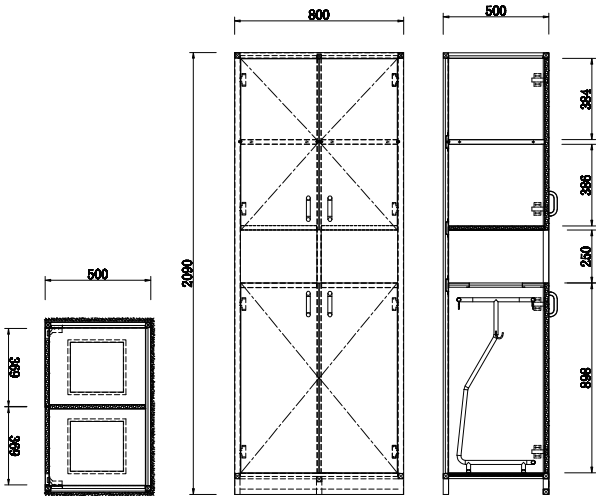
PQ312

Stainless Steel Cupboard  
Bacteriostatic 304 Stainless Steel  
Outer Size: 850 X 600 X 2090  
Thickness: Optional 1.2 / 1.5  
Hairline Finished  
Custom And Standard Size Available



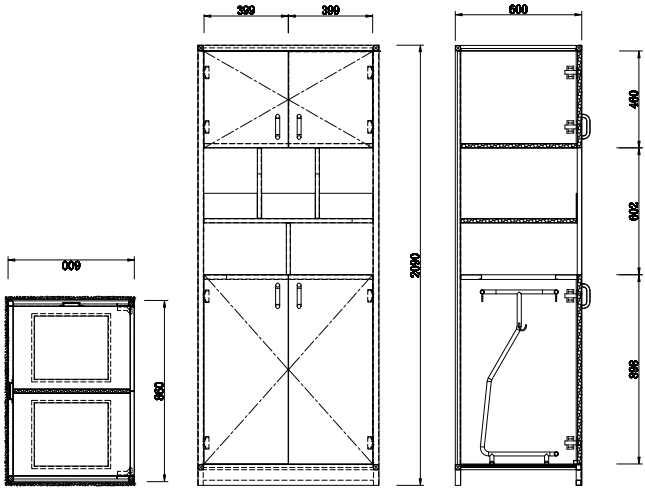
PQ319

Stainless Steel Cupboard  
Bacteriostatic 304 Stainless Steel  
Outer Size: 800 X 500 X 2090  
Thickness: Optional 1.2  
Hairline Finished  
Custom And Standard Size Available



PQ313

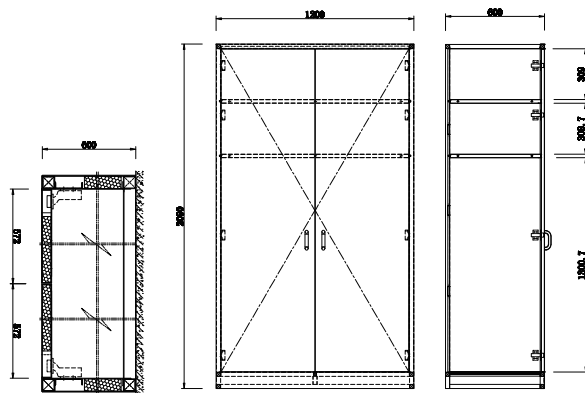
Stainless Steel Cupboard  
Bacteriostatic 304 Stainless Steel  
Outer Size: 860 X 600 X 2090  
Thickness: Optional 1.2  
Hairline Finished  
Custom And Standard Size Available





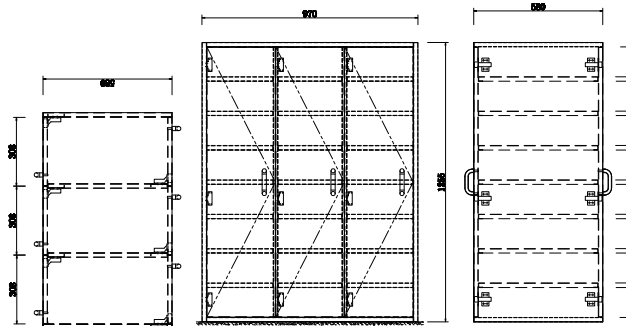
PQ339

Stainless Steel Cupboard  
Bacteriostatic 304 Stainless Steel  
Outer Size: 1200 X 600 X 2090  
Thickness: Optional 1.2  
Hairline Finished  
Custom And Standard Size Available



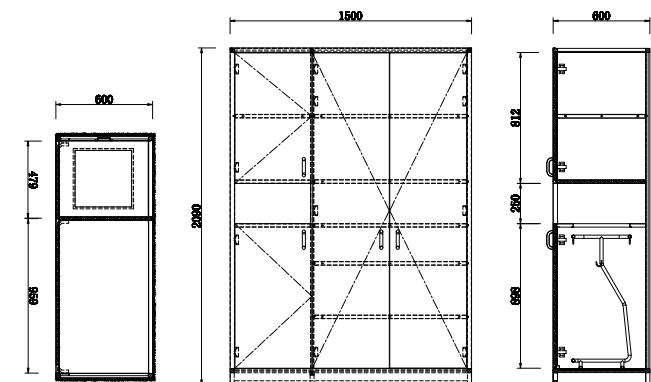
PQ81

Three Doors Cupboard  
Bacteriostatic 304 Stainless Steel  
Outer Size: 970 X 580 X 1255  
Thickness: Optional 1.2  
Hairline Finished  
Custom And Standard Size Available



PQ324

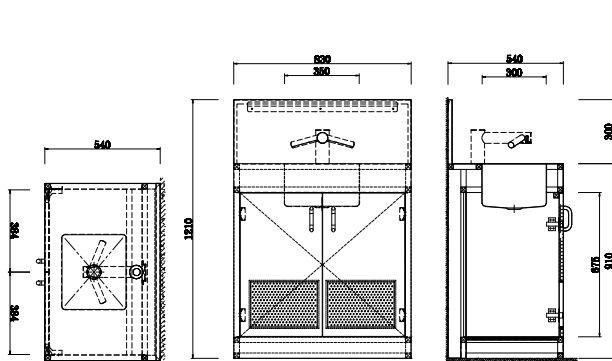
Two Doors Cupboard With Bin  
Bacteriostatic 304 Stainless Steel  
Outer Size: 1500 X 600 X 2090  
Thickness: Optional 1.2 / 1.5  
Hairline Finished  
Custom And Standard Size Available





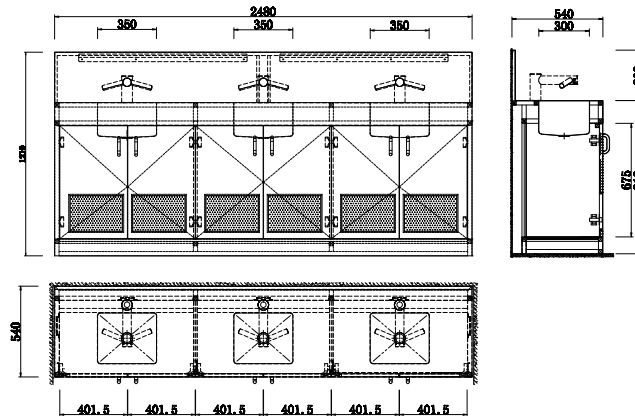
PQ311

Vanity Single Basin With Cabinet  
Bacteriostatic 304 Stainless Steel  
Outer Size: 830 X 540 X 1210  
Thickness: Optional 1.2 / 1.5  
Hairline Finished  
Custom And Standard Size Available



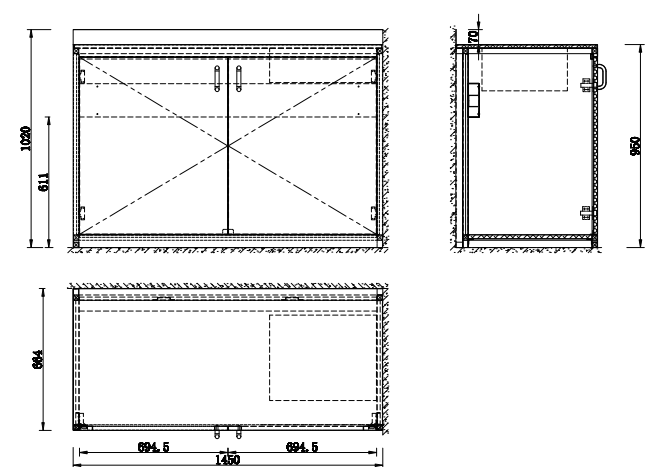
PQ320

Vanity Three Basin With Cabinet  
Bacteriostatic 304 Stainless Steel  
Outer Size: 2480 X 540 X 1210  
Thickness: Optional 1.2 / 1.5  
Hairline Finished  
Custom And Standard Size Available



PQ63

Stainless Steel Cabinet  
Bacteriostatic 304 Stainless Steel  
Outer Size: 1450 X 664 X 1020  
Thickness: Optional 1.2 / 1.5  
Hairline Finished  
Custom And Standard Size Available





PQ317

Pass Through Cupboard

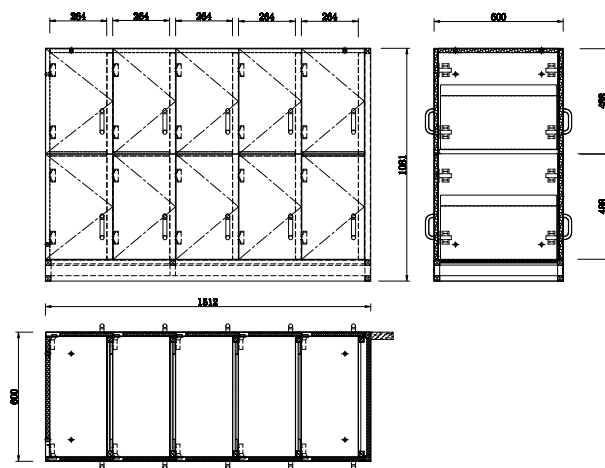
Bacteriostatic 304 Stainless Steel

Outer Size: 1511 X 600 X 1090 / 1488 X 600 X 1090

Thickness: Optional 1.2 / 1.5

Hairline Finished

Custom And Standard Size Available



PQ67

Stainless Steel Cupboard

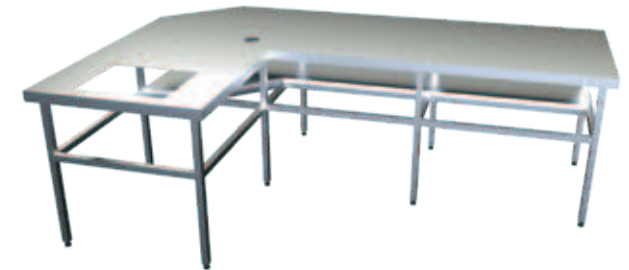
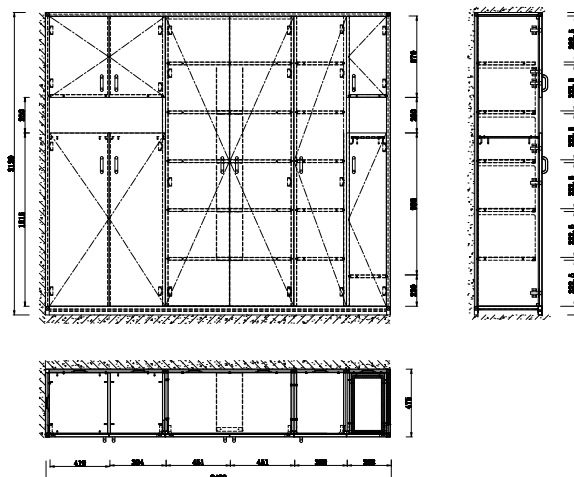
Bacteriostatic 304 Stainless Steel

Outer Size: 2420 X 475 X 2120

Thickness: Optional 1.2/ 1.5

Hairline Finished

Custom And Standard Size Available



PQ356

Splayed End Work Bench

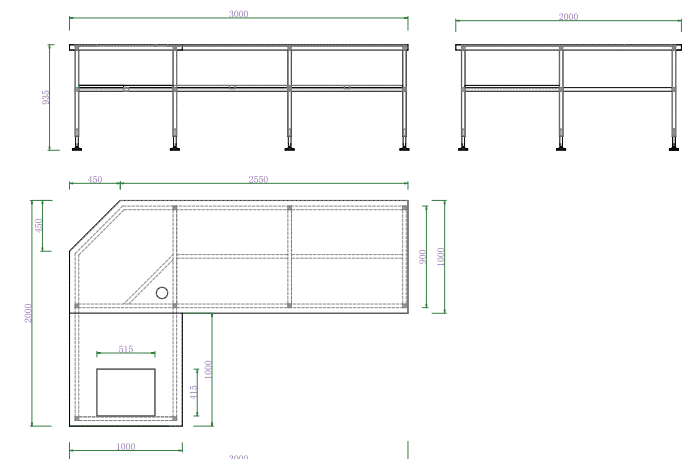
Bacteriostatic 304 Or 316 Stainless Steel

Outer Size: 3000 X 2000 X 935

Thickness: Optional 1.2 / 1.5

Hairline Finished

Custom And Standard Size Available



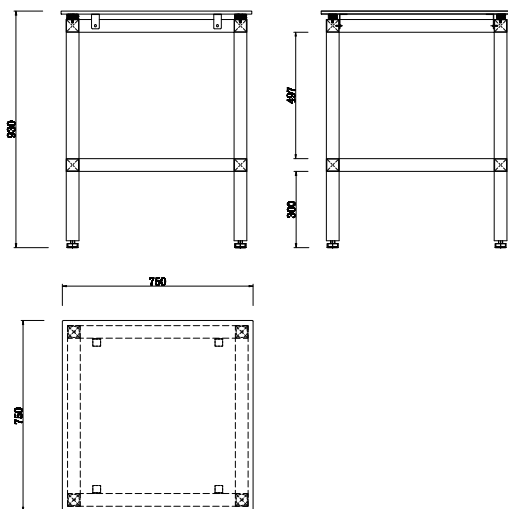
12-13

# 医疗产品系列 Medical Products Series



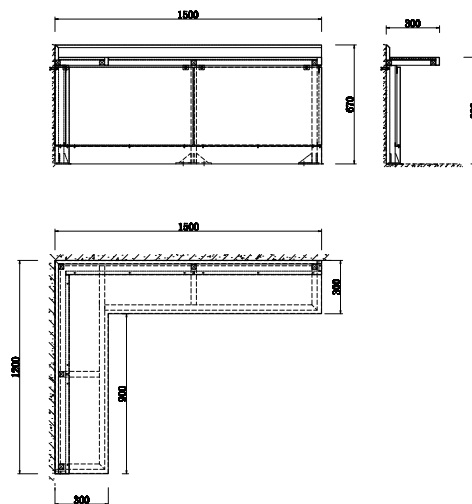
PQ342

Balance Bench  
Bacteriostatic 304 Stainless Steel  
Outer Size: 750 X 750 X 930  
Thickness: Optional 1.5  
Hairline Finished  
Custom And Standard Size Available



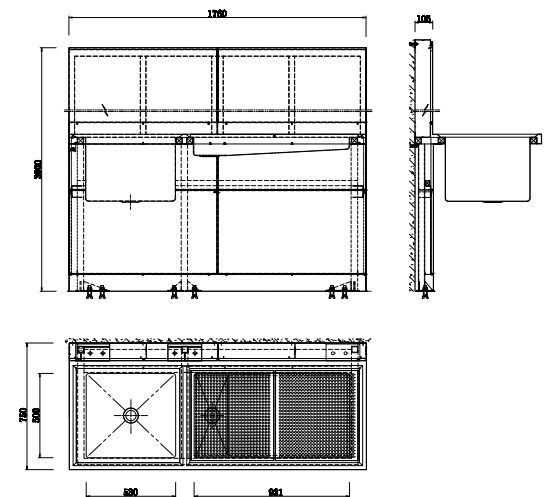
PQ325

"L" Shape Cantilever Bench  
Bacteriostatic 304 Stainless Steel  
Outer Size: 1500 X 1200 X 670  
Thickness: Optional 1.2 / 1.5  
Hairline Finished  
Custom And Standard Size Available



PQ328L

Cantilever Sink Bench With Single Bowl  
Bacteriostatic 304 Or 316 Stainless Steel  
Outer Size: 1760 X 750 X 3000  
Thickness: Optional 1.2 / 1.5  
Hairline Finished  
Custom And Standard Size Available

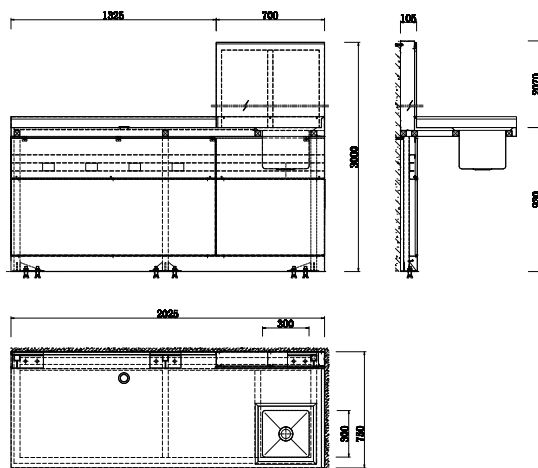






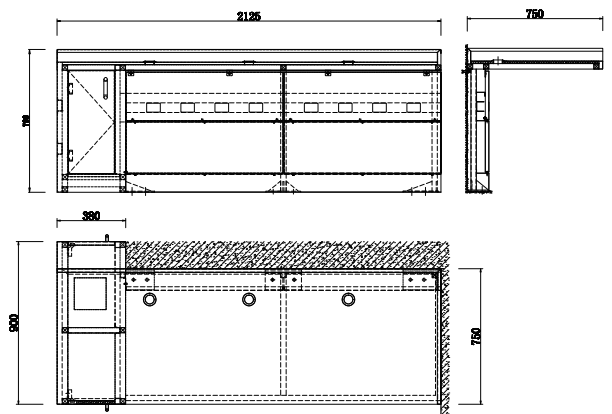
PQ329L

Cantilever Sink Bench With Single Bowl  
Bacteriostatic 304 Or 316 Stainless Steel  
Outer Size: 2025 X 750 X 1000 / 2025 X 750 X 3000  
Thickness: Optional 1.2 / 1.5  
Hairline Finished  
Custom And Standard Size Available



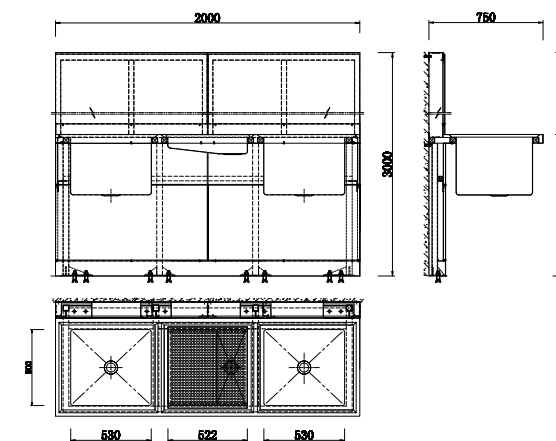
PQ335

Cantilever Bench  
Bacteriostatic 304 Or 316 Stainless Steel  
Outer Size: 2125 X 750 X 900  
Thickness: Optional 1.2 / 1.5  
Hairline Finished  
Custom And Standard Size Available



PQ341

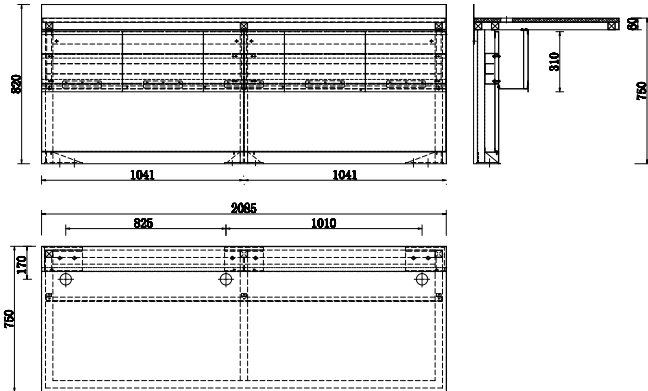
Cantilever Sink Bench With Double Bowls  
Bacteriostatic 304 Or 316 Stainless Steel  
Outer Size: 2000 X 750 X 3000  
Thickness: Optional 1.2 / 1.5  
Hairline Finished  
Custom And Standard Size Available





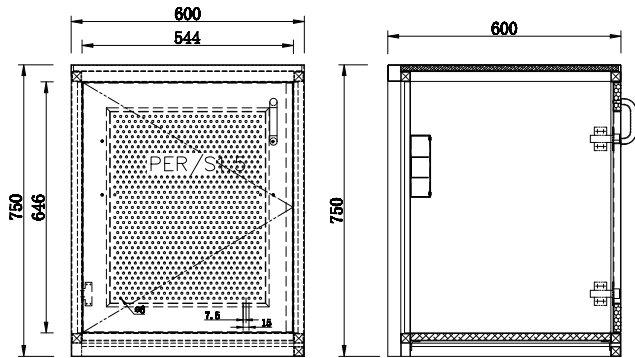
PQ40

Cantilever Sink Bench  
Bacteriostatic 304 Stainless Steel  
Outer Size: 2085 X 750 X 750  
Thickness: Optional 1.2 / 1.5  
Hairline Finished  
Custom And Standard Size Available



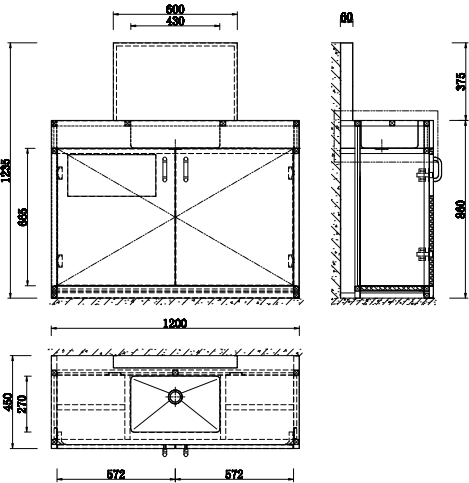
PQ46

Single Cupboard  
Bacteriostatic 304 Stainless Steel  
Outer Size: 600 X 600 X 750  
Thickness: Optional 1.2 / 1.5  
Hairline Finished  
Custom And Standard Size Available



PQ99

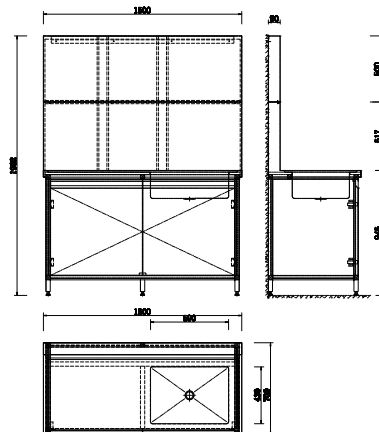
Cantilever Sink Bench With Single Bowl  
Bacteriostatic 304 Stainless Steel  
Outer Size: 1200 X 450 X 1235  
Thickness: Optional 1.2 / 1.5  
Hairline Finished  
Custom And Standard Size Available





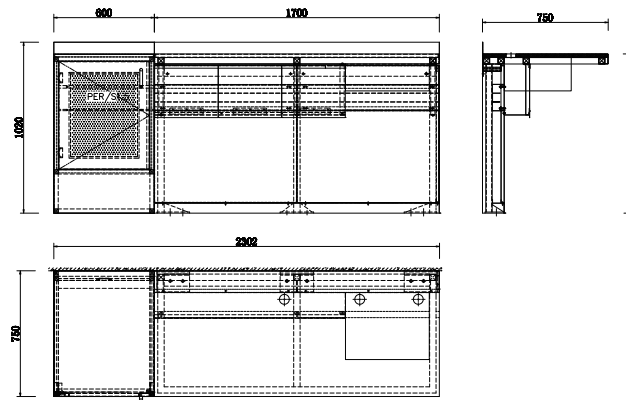
PQ97

Cantilever Sink Bench With Single Bowl  
Bacteriostatic 304 Stainless Steel  
Outer Size: 1500 X 700 X 1962  
Thickness: Optional 1.2 / 1.5  
Hairline Finished  
Custom And Standard Size Available



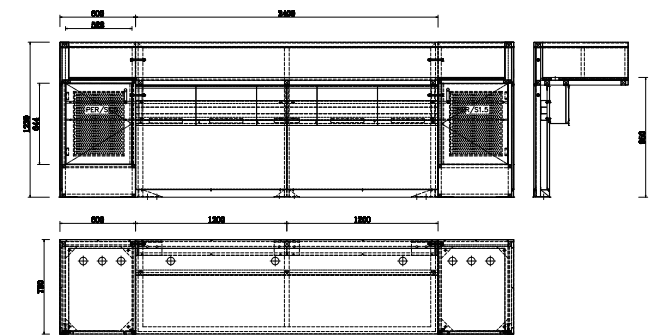
PQ87

Cantilever Sink Bench  
Bacteriostatic 304 Stainless Steel  
Outer Size: 2300 X 750 X 750  
Thickness: Optional 1.2 / 1.5  
Hairline Finished  
Custom And Standard Size Available



PQ53

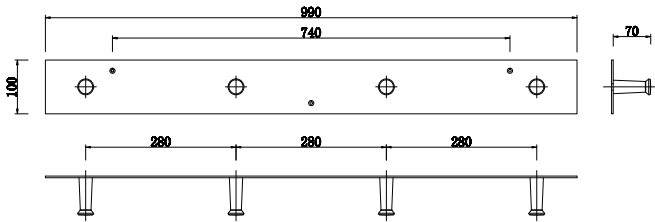
Long Working Table  
Bacteriostatic 304 Stainless Steel  
Outer Size: 3600 X 750 X 1230  
Thickness: Optional 1.2 / 1.5  
Hairline Finished  
Custom And Standard Size Available





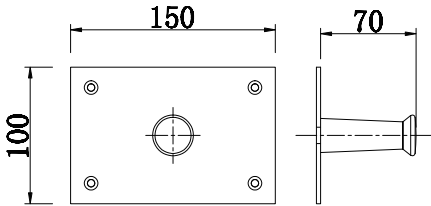
PQ365

Clothes Hook  
Bacteriostatic 304 Stainless Steel  
Outer Size: 990 X 100 X 70  
Thickness: Optional 3.0  
Hairline Finished  
Custom And Standard Size Available



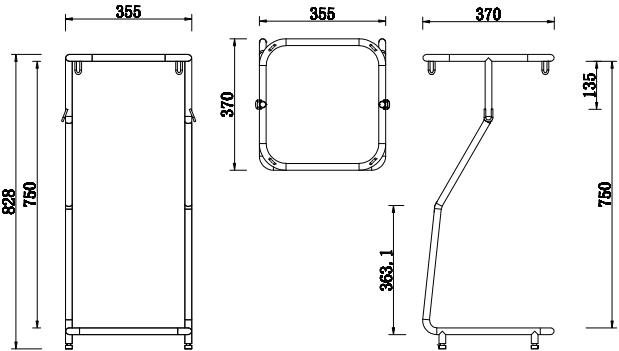
PQ364

Clothes Hook  
Bacteriostatic 304 Stainless Steel  
Outer Size: 150 X 100 X 70  
Thickness: Optional 3.0  
Hairline Finished  
Custom And Standard Size Available



G9-03736

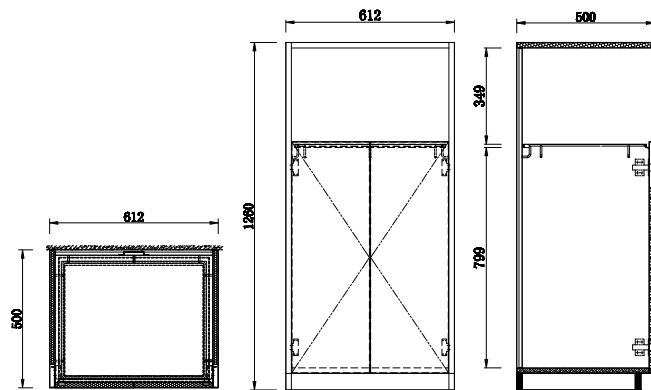
Garbage Bag Shelf  
Bacteriostatic 304 Stainless Steel  
Outer Size: 370 x 355 x 828  
Thickness: Optional 1.2  
Hairline Finished  
Custom And Standard Size Available





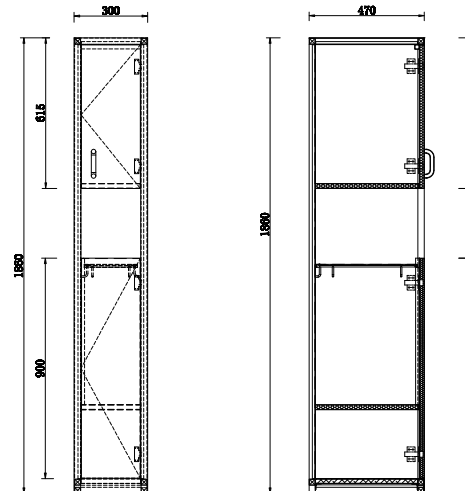
PQ54

Stainless Steel Cabinet With Bin  
Bacteriostatic 304 Stainless Steel  
Outer Size: 612 X 500 X 1260  
Thickness: Optional 1.2 /1.5  
Hairline Finished  
Custom And Standard Size Available



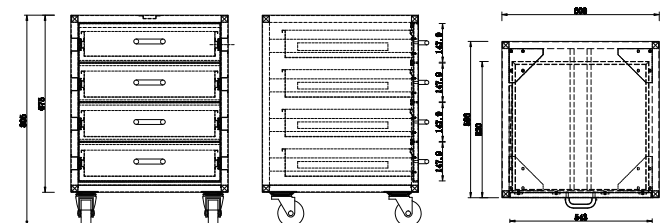
PQ60

Stainless Steel Cabinet With Bin  
Bacteriostatic 304 Stainless Steel  
Outer Size: 470 X 300 X 1860  
Thickness: Optional 1.2  
Hairline Finished  
Custom And Standard Size Available



PQ118

Moving Drawer Truck  
Bacteriostatic 304 Stainless Steel  
Outer Siz: 600 X 596 X 805  
Thickness: Optional 1.2  
Hairline Finished  
Custom And Standard Size Available







## **XINHE STAINLESS STEEL PRODUCTS,CO,LTD**

ADD: Nan Ge Lang Industry Zone, Hetang Town, Jiangmen City, Guangdong Province China

E-mail: Janechan@xin-he.com.cn / xinhesink@xin-he.com.cn

Web: [www.sinkhall.com](http://www.sinkhall.com)

TEL: 0086-750-3133823

FAX: 0086-750-3133873

