

XINHE Stainless Steel Products Co.,Ltd

From 1990s

OEM & ODM

MORE THAN 30 YEARS EXPERIENCE

PERFECT CUSTOMIZED PRODUCTIONS FOR
YOUR SOLUTION; CUSTOM LOGO, CUSTOM DESIGN

Custom logo

Custom Design

[click to view](#)



XINHE Stainless Steel Products Co.,Ltd

From 1990s

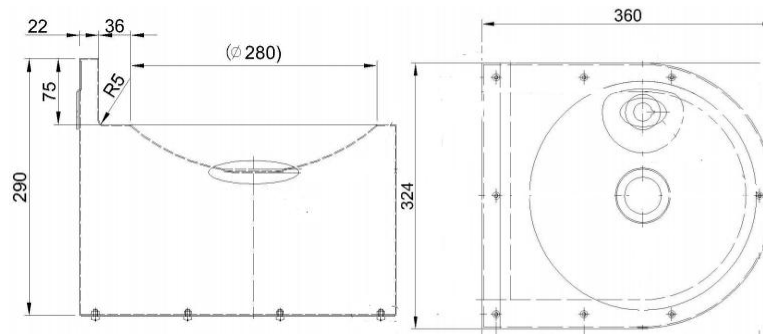
- Drinking Fountain Series-----
 - Long Troughs Series-----
 - WUDU Foot Wash Sink Series-----
 - Medical Sink Series-----
 - Urinal & Toilet Series-----
 - ADA Basins Series-----
 - Cleaner Sink Series-----
 - Knee Operated Sink Series-----
 - Hand Wash Basins Series-----
 - Hammered Sink Series-----
 - Others
- 饮水机系列
 - 长水槽系列
 - WUDU水槽系列
 - 医用水槽系列
 - 尿槽和厕所系列
 - ADA水槽系列
 - 清洁工盆系列
 - 膝推盆系列
 - 洗手水槽系列
 - 捶打盆系列
 - 其他

Drinking Fountain Series

Photo



Drawing



Detail

Item NO.:PF01

Material:Grade 304 satin S.S. or Grade 316 satin S.S.

Thickness:1.2 or 1.5mm

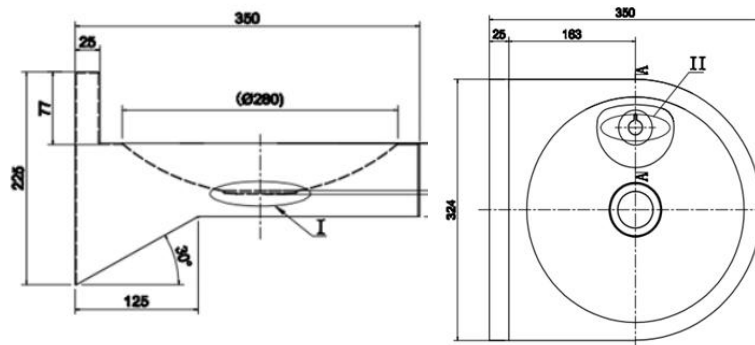
Size:324*360*290mm

Option Accessories: bubbler and drainer
Wall mounted, Suits schools, airports, shopping mall

Photo



Drawing



Detail

Item NO.:PF02

Material:Grade 304 satin S.S. or Grade 316 satin S.S.

Thickness:1.2 or 1.5mm

Size:324*350*225mm

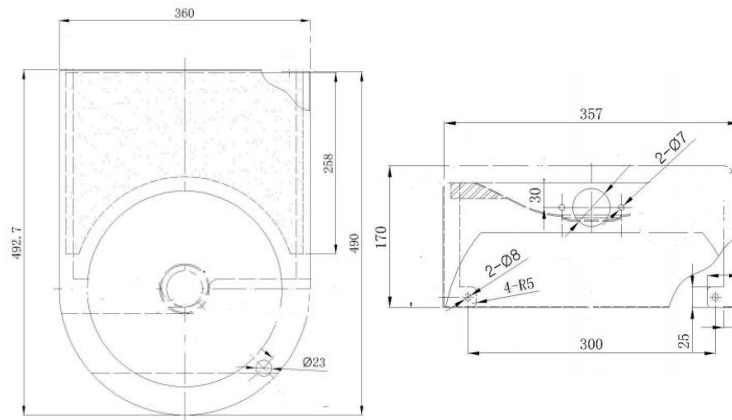
Option Accessories: bubbler and drainer
Wall mounted, Suits schools, airports, shopping mall

Drinking Fountain Series

Photo



Drawing



Detail

Item NO.:PF09

Material:Grade 304 satin S.S. or Grade 316 satin S.S.

Thickness:1.2 or 1.5mm

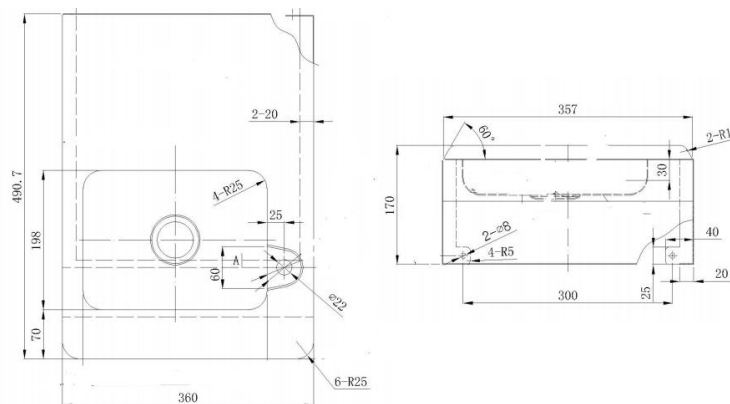
Size:360*490*170mm

Option Accessories: bubbler and drainer
Wall mounted, Suits schools, airports, shopping centres and public areas
ADA Single Round Accessible

Photo



Drawing



Detail

Item NO.:PF10

Material:Grade 304 satin S.S. or Grade 316 satin S.S.

Thickness:1.2 or 1.5mm

Size:360*490*170mm

Option Accessories: bubbler and drainer
Wall mounted, Suits schools, airports, shopping centres and public areas
ADA Single Rectangler Accessible

Drinking Fountain Series



features and benefits

- Modern appearance
- Choice of accessible and compact (standard) models
- Front piezo timed flow bubbler
- Stainless bracket supplied
- Bacteriostatic 304 or 316 stainless steel
- Hairline finished
- 52mm waste outlet
- Integral splash back panel
- Concealed Access
- Suits schools, airports, shopping centres and public areas
- ADA Compliant

about

The Xinhe Stainless Steel Single Round Drinking Fountain - is a stylish, versatile fixture

that can be supplied in either an accessible configuration or a space saving compact size. Both models are supplied complete with a front push, timed flow bubbler, splashback panel, waste outlet, mounting bracket and concealed access. Manufactured from commercial grade 304 stainless steel.



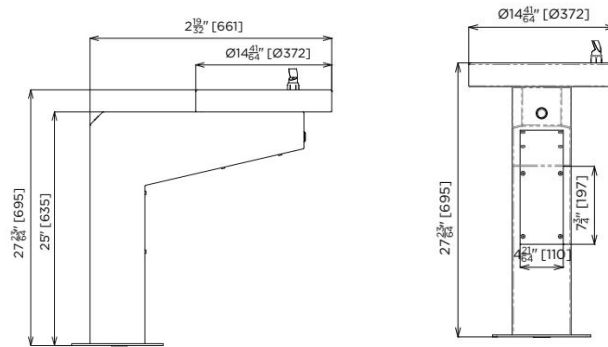
ADA
Compliant

Drinking Fountain Series

Photo



Drawing



Detail

Item NO.:PF11

Material: Grade 304 satin S.S.

Thickness:1.2 or 1.5mm

Size:372*661*695mm

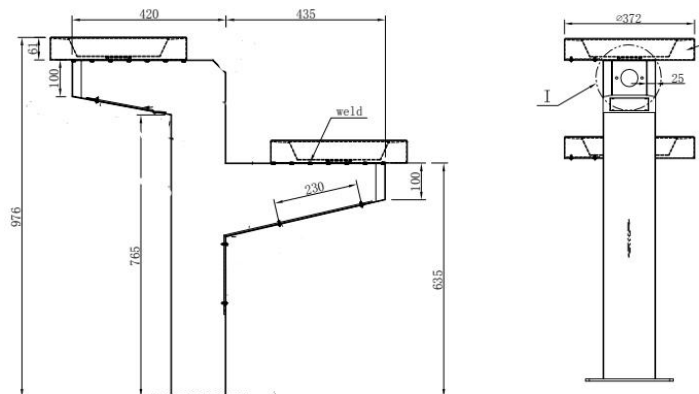
Freestanding fountain; Suits schools, airports, shopping centers and public areas

Available in single and twin bowl configurations

Photo



Drawing



Detail

Item NO.:PF13

Material: Grade 304 satin S.S.

Thickness:1.2 or 1.5mm

Size:350*973*976mm

Freestanding fountain; Front push, timed flow bubbler;

Suits schools, airports, shopping centers and public areas

Vandal resistant access hatch

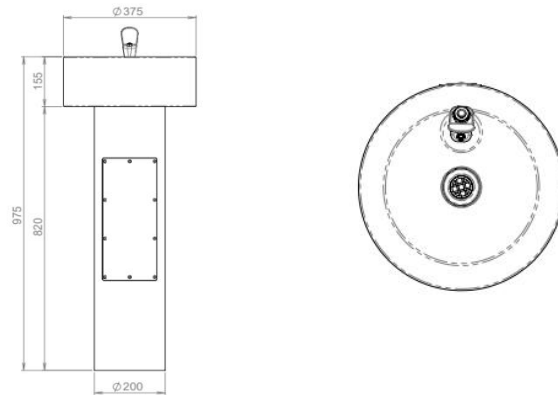
Available in two different heights: 975mm for adult and 635mm for children or custom

Drinking Fountain Series

Photo



Drawing



Detail

Item NO.:PF12

Material: Grade 304 satin S.S.

Thickness:1.2 or 1.5mm

Size:φ375*975mm

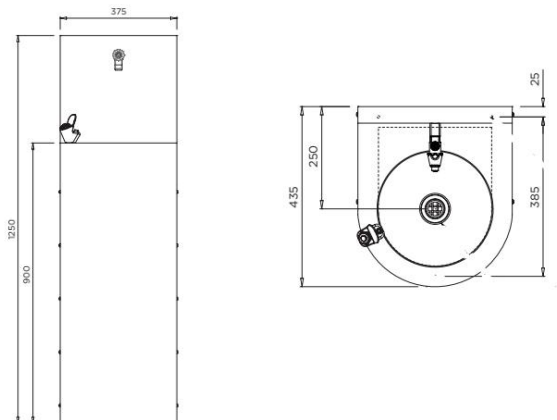
Freestanding fountain, Fixes to ground below; Suits schools, airports, shopping centers and public areas

Vandal resistant access hatch

Photo



Drawing



Detail

Item NO.:PF14

Material: Grade 304 satin S.S.

Thickness:1.2 or 1.5mm

Size:375*435*1250mm

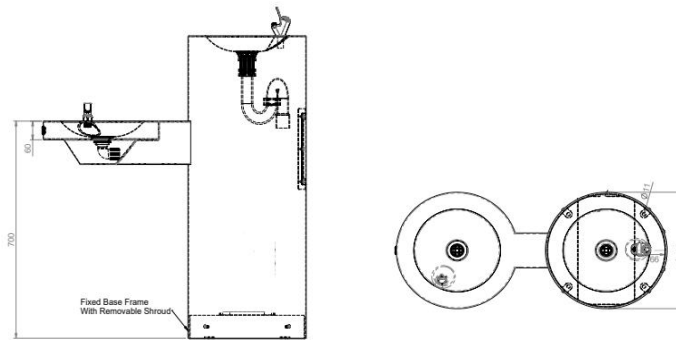
Secured to rear wall and floor; Suits gyms, health clubs, schools and sporting clubs

Drinking Fountain Series

Photo



Drawing



Detail

Item NO.:PF35

Material: Grade 304 satin S.S.

Thickness:1.2 or 1.5mm

Size:935*400*975mm

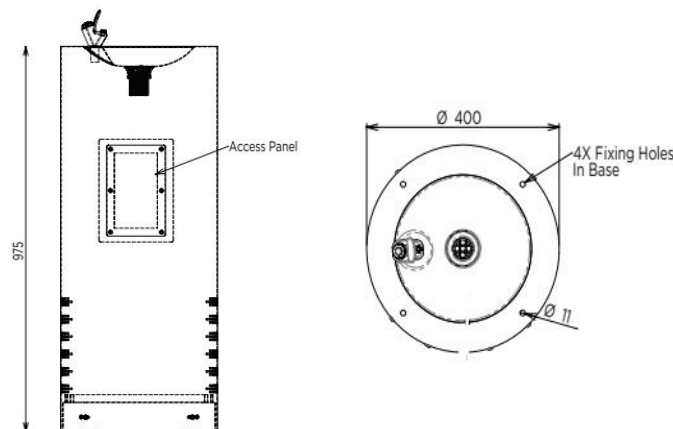
Freestanding fountain; Suits schools, airports, shopping centers and public areas

Available in two round bowls: 975mm for adult and 635mm for children or custom

Photo



Drawing



Detail

Item NO.:PF04

Material: Grade 304 satin S.S.

Thickness:1.2 or 1.5mm

Size:φ400*975mm

Freestanding fountain; Suits schools, airports, shopping centers and public areas

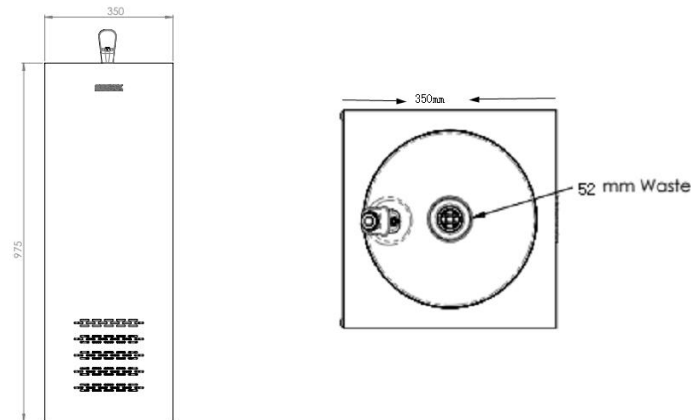
Available in two different heights: 975mm for adult and 750mm for children or custom

Drinking Fountain Series

Photo



Drawing



Detail

Item NO.:PF07

Material: Grade 304 satin S.S.

Thickness:1.2 or 1.5mm

Size:350*350*975mm

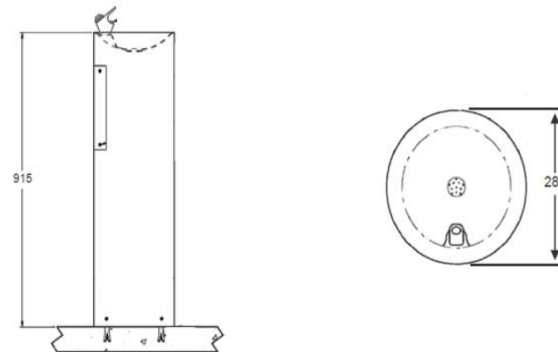
Freestanding fountain; Suits schools, airports, shopping centers and public areas

Available in two different heights:
975mm for adult and 750mm for children or custom

Photo



Drawing



Detail

Item NO.:PF19

Material: Grade 304 satin S.S.

Thickness:1.2 or 1.5mm

Size:φ285*915mm

Freestanding fountain; Suits schools, airports, shopping centers and public areas

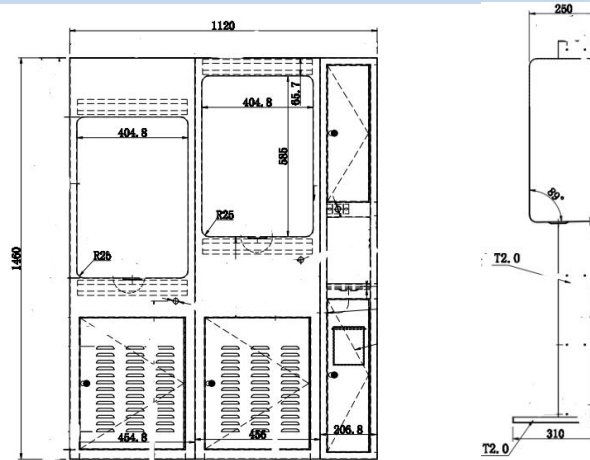
Available in two different heights:
975mm for adult and 635mm for children or custom

Drinking Fountain Series

Photo



Drawing



Detail

Item NO.:PF38

Material: Grade 304 satin S.S. Thickness:1.2 mm

Size:1120*250*1460mm

Inset into the wall; Suits schools, airports, shopping centers and public areas

Three bowls: one is for adult and one is for children ,and one is for cup bottle

Including waste bin

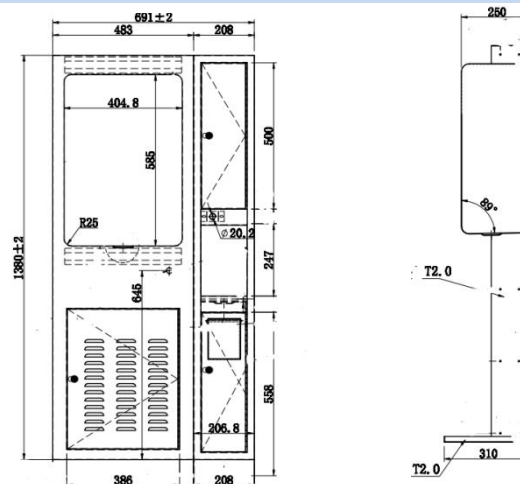
Mechanical push button

Welded, heavy-gauge steel frame

Photo



Drawing



Detail

Item NO.:PF39

Material: Grade 304 satin S.S. Thickness:1.2 mm

Size:691*250*1380mm

Inset into the wall; Suits schools, airports, shopping centers and public areas

Tow bowls: one is for adult and one is for cup bottle

Including waste bin

Welded, heavy-gauge steel frame

Long Trough Series

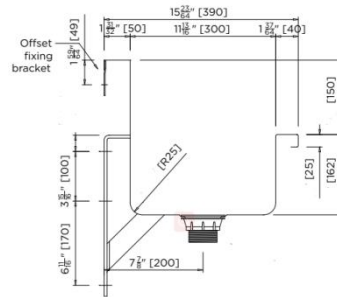
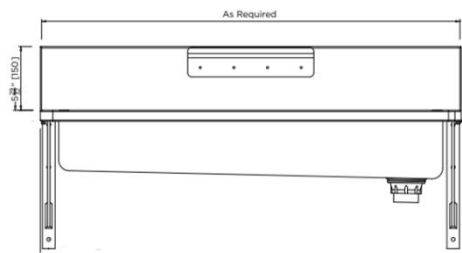
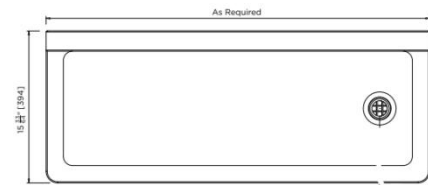
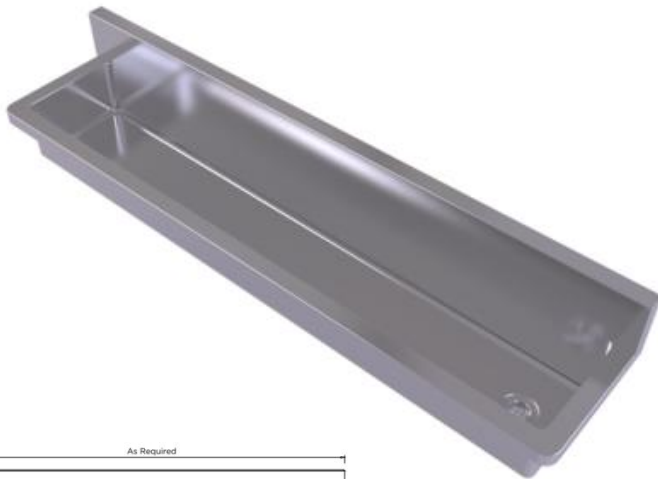
Item Code:PWT 104

Features and benefits

- Concealed tap ware connections
- Bacteriostatic 304 or 316 stainless steel
- Hairline finished
- 90 mm waste outlet, Left or right hand waste position
- Radius internal corners - easy cleaning
- Radius external corners - added safety
- Ideal for schools, kindergartens,
- No tap hole

Standard size

- ◆ 1200*390*312mm for two taps
- ◆ 1800*390*312mm for three taps
- ◆ 2100*390*312mm for four taps
- ◆ Customized size



Long Trough Series

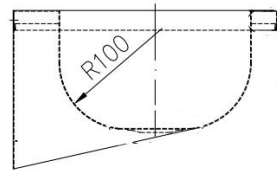
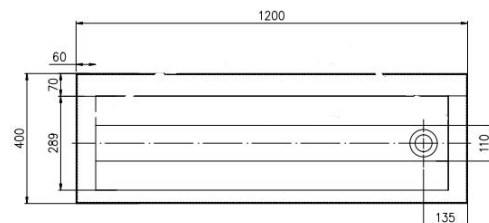
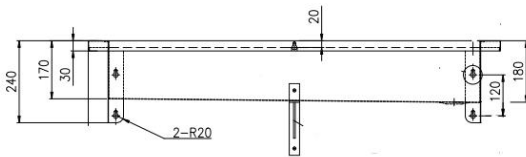
Item Code:PWT 01

Features and benefits

- Modern appearance
- Bacteriostatic 304 or 316 stainless steel
- Hairline finished
- 90 mm waste outlet
- Suits schools, airports, shopping centers and public areas, suitable for use in a range of sectors.
- This easy to install, wall-mounted wash trough is supplied with all required brackets and fixing elements
- No tap hole

Standard size

- ◆ 1200*400*240mm for two taps
- ◆ 1800*400*240mm for three taps
- ◆ 2100*400*240mm for four taps
- ◆ Customized size



Long Trough Series

Item Code:APWT-01

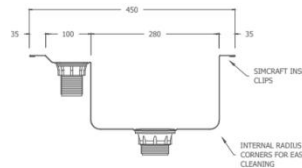
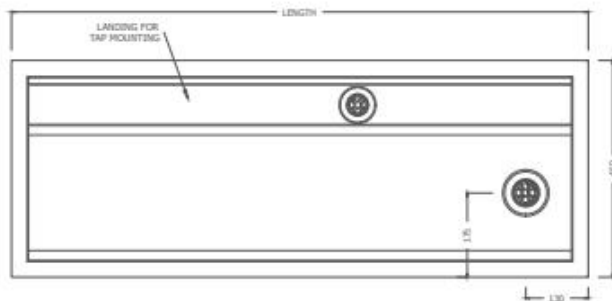


Features and benefits

- Bacteriostatic 304 or 316 stainless steel
- Hairline finished
- 90 mm waste outlet, Left or right hand waste position
- suitable for use in a range of sectors.
- This easy to install, wall-mounted wash trough is supplied with all required brackets and fixing elements
- Radius internal corners for easy cleaning
- Extended rear hob for tap ware mounting

Standard size

- ◆ 1200*450*160mm for two taps
- ◆ 1800*450*160mm for three taps
- ◆ 2100*450*160mm for four taps
- ◆ Customized size



Long Trough Series

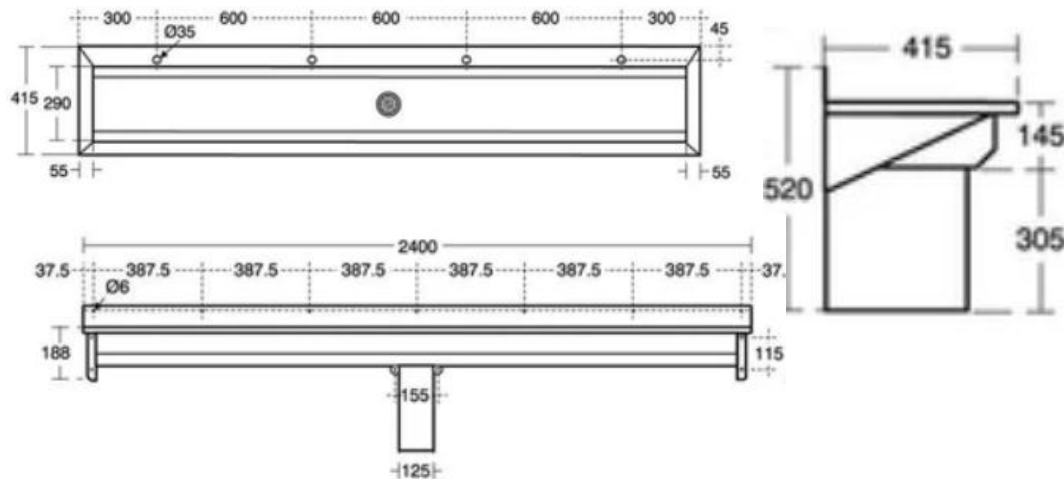
Item Code:APWT-02

Features and benefits

- Concealed waste pipe
- Bacteriostatic 304 or 316 stainless steel
- Hairline finished
- 90 mm waste outlet,
- suitable for use in a range of sectors.
- This easy to install, wall-mounted wash trough is supplied with all required brackets and fixing elements
- Radius internal corners for easy cleaning
- Extended rear hob for tap ware mounting

Standard size

- ◆ 1200*415*520mm for two taps
- ◆ 1800*415*520mm for three taps
- ◆ 2400*415*520mm for four taps
- ◆ Customized size



Long Trough Series

Item Code:PWT-106

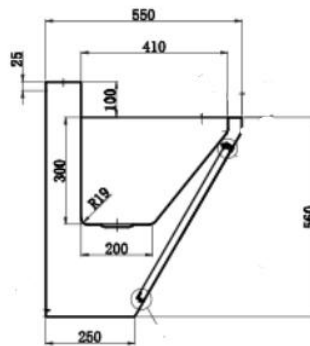
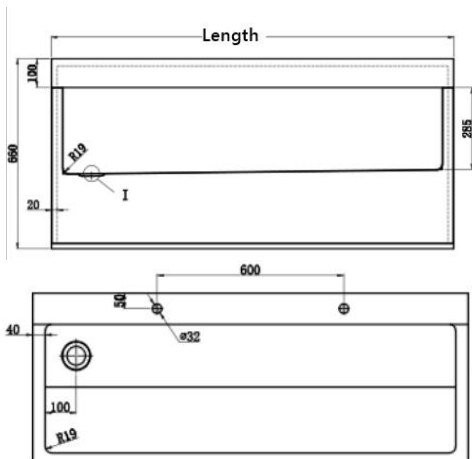


Features and benefits

- Concealed waste pipe and tapware connections
- Bacteriostatic 304 or 316 stainless steel
- Hairline finished
- 90 mm waste outlet,
- suitable for use in a range of sectors.
- This easy to install, wall-mounted wash trough is supplied with all required brackets and fixing elements
- Radius internal corners for easy cleaning
- Removable front plate for easy maintenance

Standard size

- ◆ 1200*550*660mm for two taps
- ◆ 1800*550*660mm for three taps
- ◆ 2100*550*660mm for four taps
- ◆ Customized size



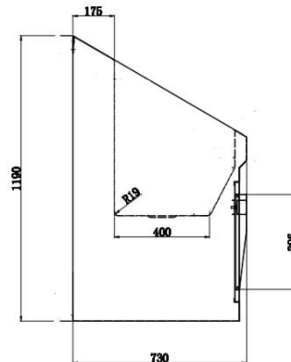
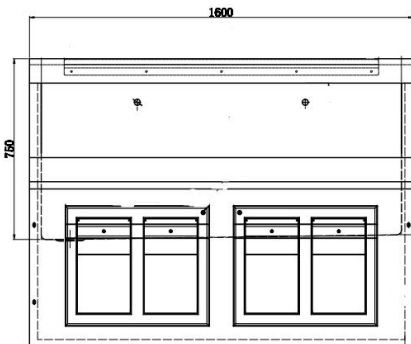
Long Trough Series

Item Code:APWT-05



Features and benefits

- Knee operated and sensor water tap and soap dispenser long trough
- Bacteriostatic 304 or 316 stainless steel
- Hairline finished
- 90 mm waste outlet, Left or right hand waste position
- Radius internal corners - easy cleaning,
- High splash board



Standard size

- ◆ 1600*730*1190mm
- ◆ 2400*730*1190mm
- ◆ Customized size

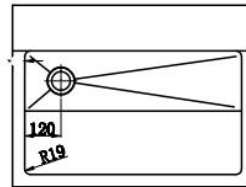
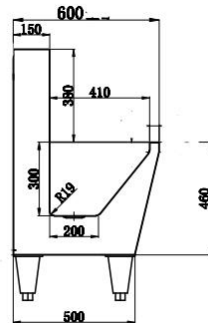
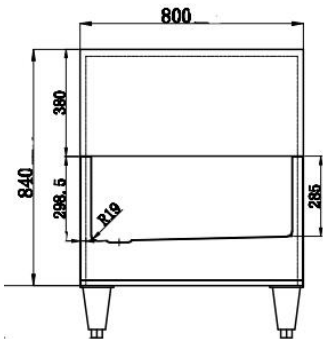
Long Trough Series

Item Code:APWT-04



Features and benefits

- Concealed tap ware connections
- Bacteriostatic 304 or 316 stainless steel
- Hairline finished
- 90 mm waste outlet, Left or right hand waste position
- Radius internal corners - easy cleaning,
- High splash board
- floor standing



Standard size

- ◆ 800*600*840mm
- ◆ 1600*600*840mm
- ◆ 2400*600*840mm
- ◆ Customized size

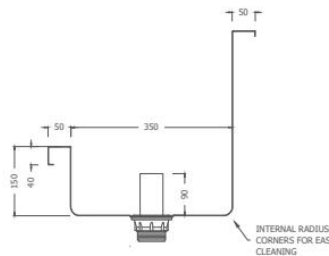
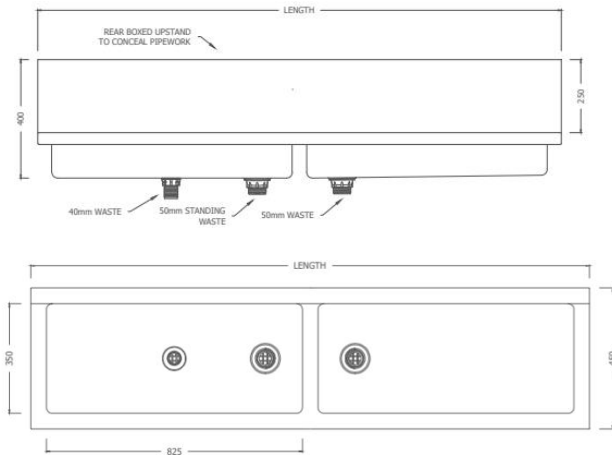
Long Trough Series

Item Code:APWT-03



Features and benefits

- Bacteriostatic 304 or 316 stainless steel
- 52 mm waste outlet,
- This easy to install, wall-mounted wash trough is supplied with all required brackets and fixing elements
- All-in-one design: One bowl is designed to be for the washing of items soiled with sedimentary materials such as clay, plaster and paint, with a raised outlet allowing the drainage of water while the solid matter settles at the bottom for later removal; the other bowl can be used concurrently for hand washing. The versatility of this unit makes it a perfect all-in-one option for a range of applications including classrooms and art studios.



Standard size

- ◆ 1800*450*400mm for two taps
- ◆ Customized size

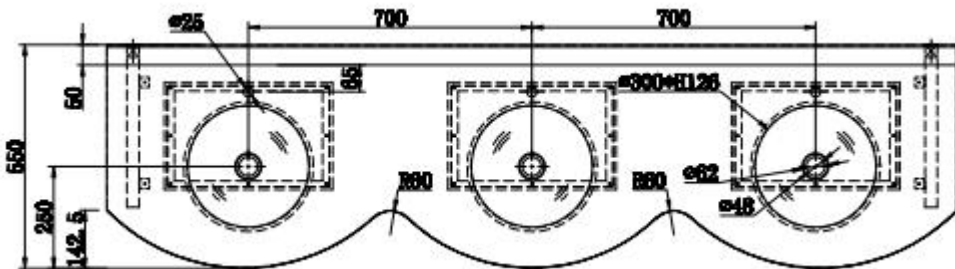
Long Trough Series

Item Code:APWT-06



Features and benefits

- Curved Front, Wall Mounted System
- Bacteriostatic 304 or 316 stainless steel
- 52 mm waste outlet,
- Washbasins are straight curved and are available in one, two, three or four station units
- Contains Recycled Material, Lead Free, Recyclable, Space-Saving Design, Water Saving

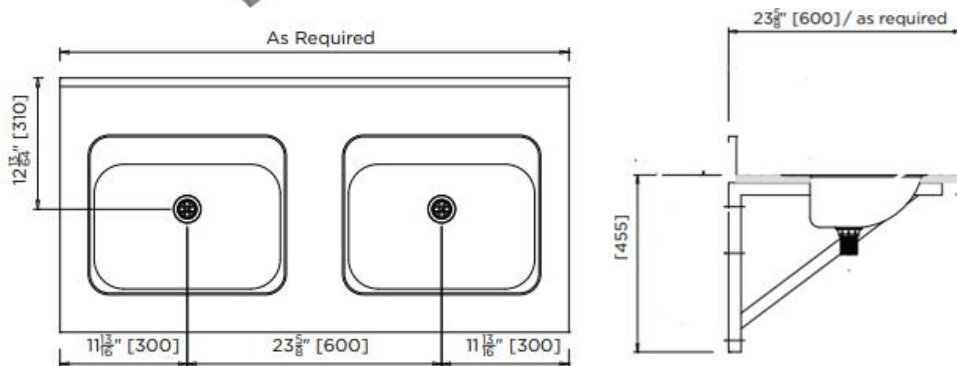


Standard size

- ◆ 1200*550*380mm for two taps
- ◆ 1800*550*380mm for three taps
- ◆ Customized size

Long Trough Series

Item Code:APWT-07



Features and benefits

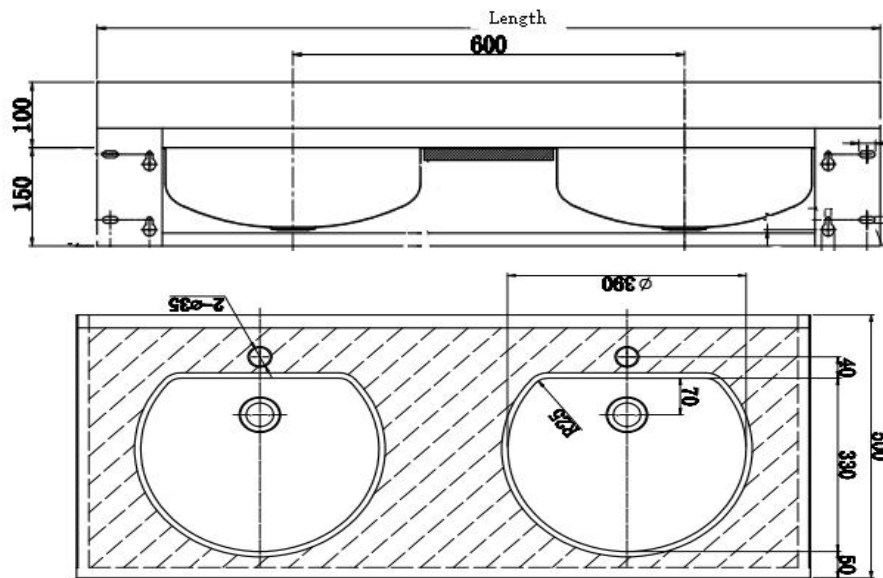
- Supplied in custom lengths
- Incorporates multiple hand basins
- Satin finish top polished bowls
- Fully welded, seamless construction
- Grade 304 S.S.
- Integral rear splashback
- 1.57" [40] waste & wall brackets supplied
- Suitable for mounting on joinery
- Ideal for parks and recreation, schools and clubs

Standard size

- ◆ 1200*600*455mm for two taps
- ◆ 1800*600*455mm for three taps
- ◆ Customized size

Long Trough Series

Item Code:APWT-07



Features and benefits

- Supplied in custom lengths
- Incorporates multiple hand basins
- Satin finish top polished bowls
- Fully welded, seamless construction
- Grade 304 S.S.
- Integral rear splashback
- 1.57"[40] waste & wall brackets supplied
- Suitable for mounting on joinery
- Ideal for parks and recreation, schools and clubs

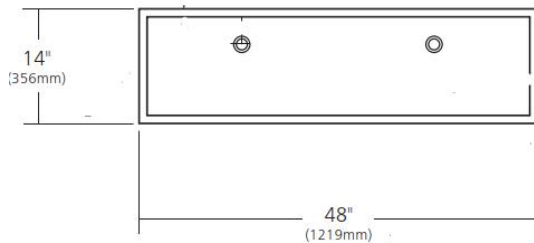
Standard size

- ◆ 1200*600*455mm for two taps
- ◆ 1800*600*455mm for three taps
- ◆ Customized size



Long Trough Series

Item Code:APWT-07



- Bacteriostatic 304 stainless steel
- Perfect for sharing. Hammered Trough is the ideal size for larger bathrooms – with plenty of room for two –you may find yourself seeking alone time just to delight in this trough bathroom sink's handcrafted beauty. Hammered Trough perfectly combines the functionality of two sinks with the beauty, style, and easy maintenance of one.

Features
and
benefits

Standard
size

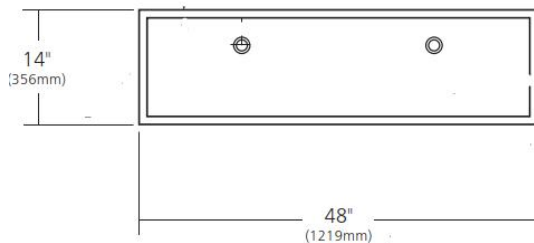
- ◆ 1200*356*152mm for two taps
- ◆ 1800*356*152mm for three taps
- ◆ Customized size





Long Trough Series

Item Code:APWT-08



- Bacteriostatic 304 stainless steel
- Perfect for sharing. Hammered Trough is the ideal size for larger bathrooms – with plenty of room for two –you may find yourself seeking alone time just to delight in this trough bathroom sink's handcrafted beauty. Hammered Trough perfectly combines the functionality of two sinks with the beauty, style, and easy maintenance of one.

Features
and
benefits

Standard
size

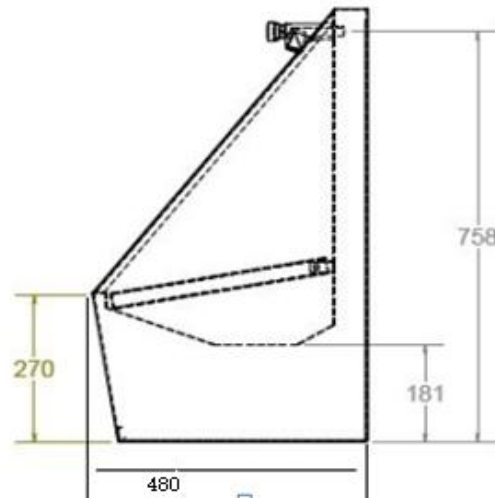
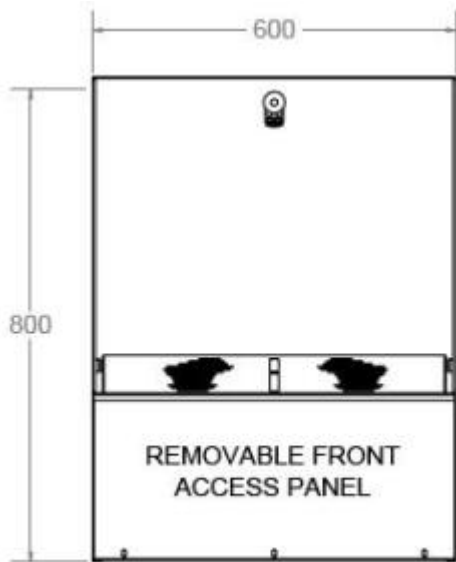
- ◆ 1219*356*152mm for two taps
- ◆ 1800*356*152mm for three taps
- ◆ Customized size





Features and benefits

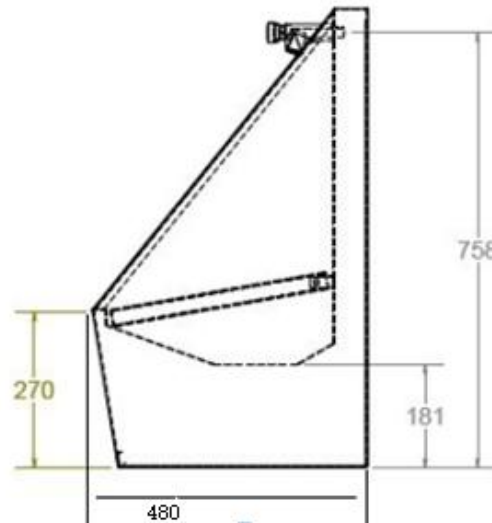
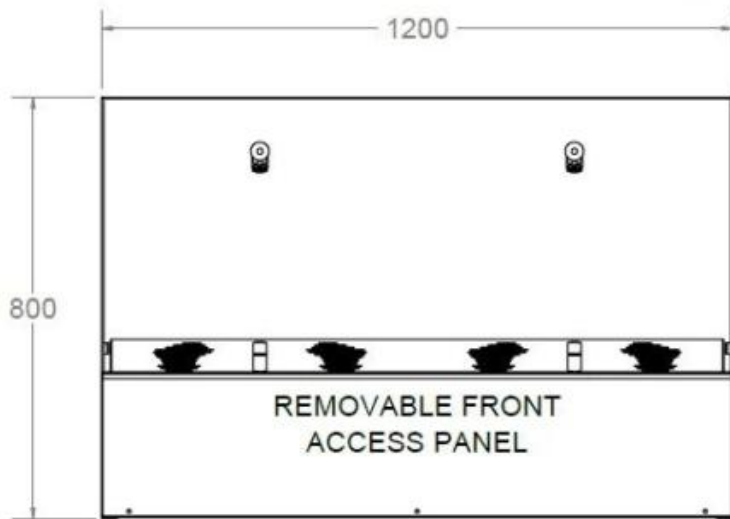
- The single Wudu foot wash trough is manufactured from stainless steel for extra vandal resistance and durability.
- Single station foot wash trough for one users.
- Stainless steel hinged foot grating to aid cleaning.
- Wudu translates as cleaning oneself in preparation for prayer.
- Ideal for Mosques, schools, and places of worship.
- Centre waste outlet
- Size: 600*480*800mm or customized
- 304 stainless steel with heavy gauge, 18 ga



Features and benefits

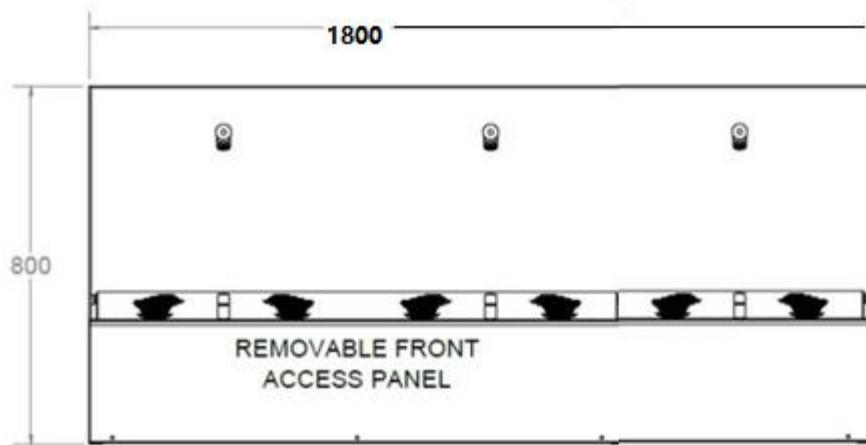
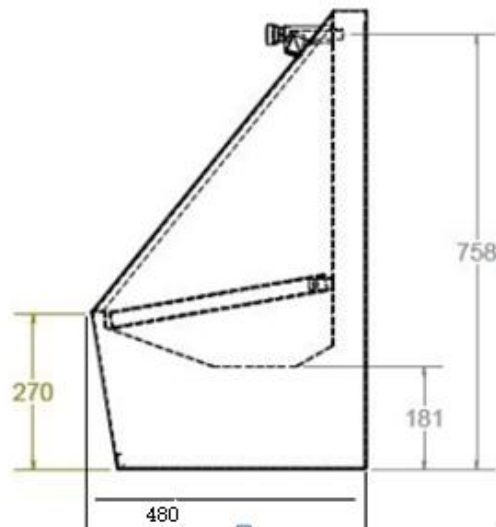


- The single Wudu foot wash trough is manufactured from stainless steel for extra vandal resistance and durability.
- Double station foot wash trough for two users.
- Stainless steel hinged foot grating to aid cleaning.
- Wudu translates as cleaning oneself in preparation for prayer.
- Ideal for Mosques, schools, and places of worship.
- Centre waste outlet
- Size: 1200*480*800mm or customized
- 304 stainless steel with heavy gauge, 18 ga



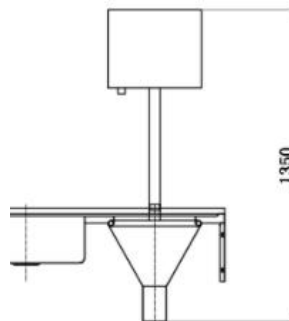
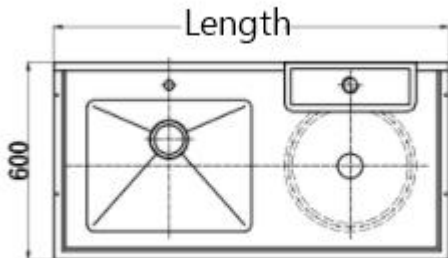
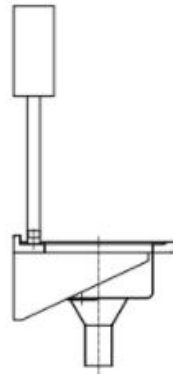
Features and benefits

- The single Wudu foot wash trough is manufactured from stainless steel for extra vandal resistance and durability.
- Triple station foot wash trough for three users.
- Stainless steel hinged foot grating to aid cleaning.
- Wudu translates as cleaning oneself in preparation for prayer.
- Ideal for Mosques, schools, and places of worship.
- Centre waste outlet
- Size: 1800*480*800mm or customized
- 304 stainless steel with heavy gauge, 18 ga



Medical sink Series

Sluice sink-1



Sluice sink (also referred to as disposal units and slop hoppers) are designed for use in hospitals, nursing homes and GP surgeries to enable the safe and hygienic disposal of clinical waste. They can also be used in a domestic setting for individuals with chronic health conditions.

Size(mm):

1200

1600

1800

custom

Material:

SS316

SS304

Installation instructions:

MOUNTED WITH
FRONT LEG
SUPPORTS

MOUNTED WITH
CANTILEVER
BRACKETS

Slop hopper position:

right

left

Optional:

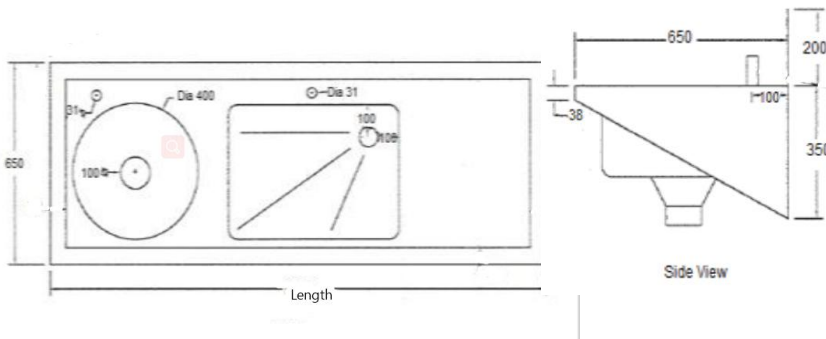


Φ1.5"



Medical sink Series

Sluice sink-2



Sluice sink (also referred to as disposal units and slop hoppers) are designed for use in hospitals, nursing homes and GP surgeries to enable the safe and hygienic disposal of clinical waste. They can also be used in a domestic setting for individuals with chronic health conditions. With high splash board

Size(mm):

1200

1600

1800

custom

Material:

SS316

SS304

Installation instructions:

MOUNTED WITH
FRONT LEG
SUPPORTS

MOUNTED WITH
CANTILEVER
BRACKETS

Slop hopper position:

right

left

Optional:



Φ 1.5"

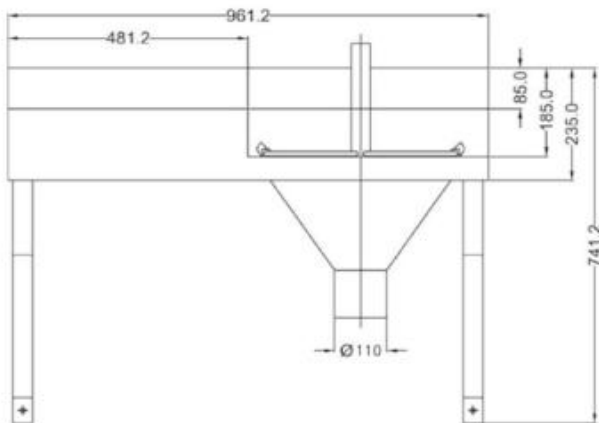
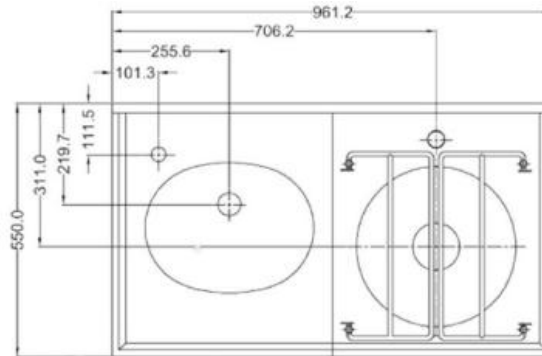


Medical sink Series

Sluice sink-3

Features and benefits

- Bacteriostatic 304 or 316 stainless steel, 1.2mm gauge
- Hinged bucket grid
- Outlet to suit standard 110mm pc or cast iron "P" trap
- 150mm height splash back
- Unit fixed to wall 850mm from the top of the front apron to the finish floor level with 4 off anchor bolts



Size(mm):

961*550*741

custom

Slop hopper position:

right

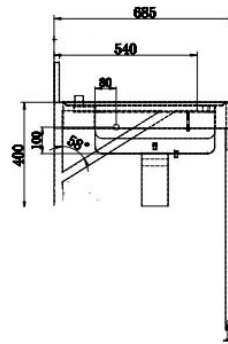
left

Optional:



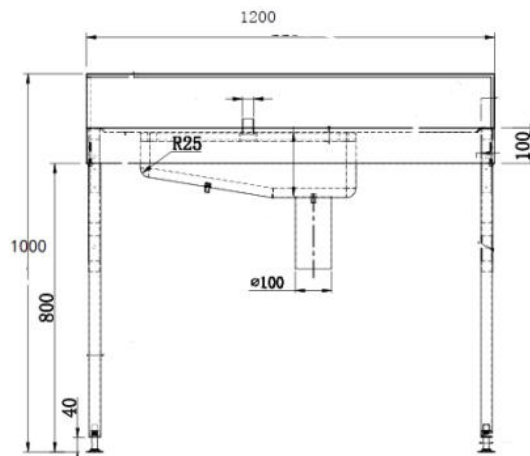
Medical sink Series

Sluice sink-4



Features and benefits

- Bacteriostatic 304 or 316 stainless steel, 1.2mm gauge
- Hinged bucket grid
- Outlet to suit standard 110mm pc or cast iron "P" trap
- 200mm height splash back
- full welding sink bowl



Size(mm):

1130*685*1000

custom

Slop hopper position:

right

left

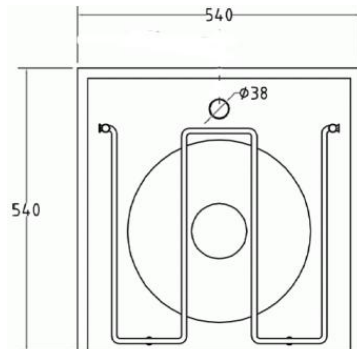
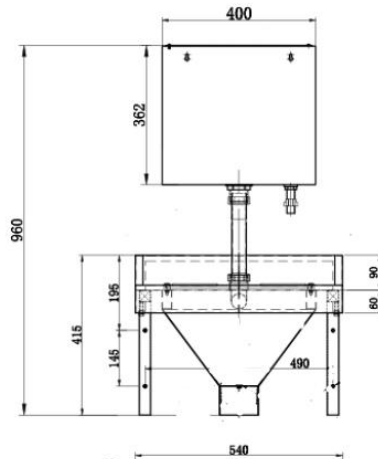
Optional:



Medical sink Series

Sluice sink-5

Sluice sink (also referred to as disposal units and slop hoppers) are designed for use in hospitals, nursing homes and GP surgeries to enable the safe and hygienic disposal of clinical waste. They can also be used in a domestic setting for individuals with chronic health conditions.



Size(mm):

540*540*415

custom

Material:

SS316

SS304

Installation instructions:

MOUNTED WITH
CANTILEVER
BRACKETS

Flushing:

Water cistern

Flushing valve

Optional:



Medical sink Series

Plaster sink



Features and benefits

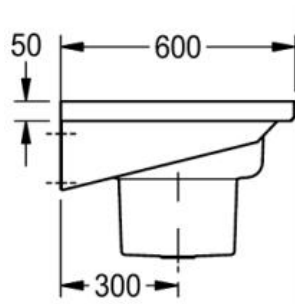
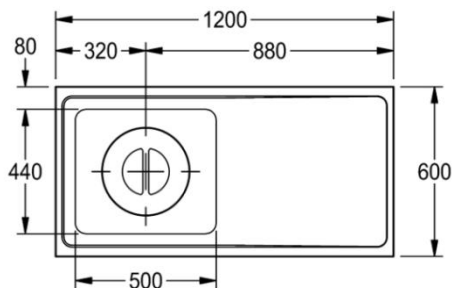
- Construction in type 304 stainless steel with mat finishing
- Fully welded seamless curves to ensuring for best hygiene
- Suitable for hospitals, healthcare establishments and leisure centers
- SS bucket with cover and handle
- With tap or without tap (As per requirement)
- Wall mounted so it's easy to clean & Install
- We do manufacture as per customer requirement

Size(mm):

600

1200

custom



Installation instructions:

MOUNTED WITH
CANTILEVER
BRACKETS

Medical sink Series

Lab sink

One Sink. Two Ways.

70mm Tapware Hob on both sides

*Incorporating
Unique Universal Sink
Design the Lab sinks can
be used for both Left
Hand and Right Hand
applications.*

316 Stainless Steel

*Manufactured in 316 S.S this
increased corrosive resistant
grade of stainless makes this
range perfect for laboratory
and medical applications
as well as schools and
cleaning areas where heavy
duty chemicals are exposed.*

50mm Centre Bowl Waste

Bowl Size

*All Bowl Sizes on our Universal Lab Sinks are standard
400mm L x 320mm W x 250mm D*

Single End Bowl



900mm Single End
Universal Laboratory Sink

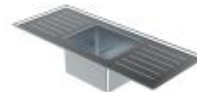


1200mm Single End
Universal Laboratory Sink

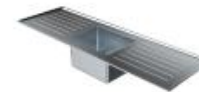


1500mm Single End
Universal Laboratory Sink

Single Centre Bowl



1200mm Single Center
Universal Laboratory Sink



1500mm Single Center
Universal Laboratory Sink

Twin End Bowl



1500mm Twin End
Universal Laboratory Sink

Twin Centre Bowl



1500mm Twin Center
Universal Laboratory Sink



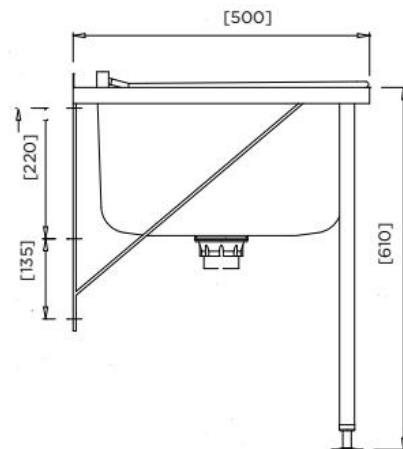
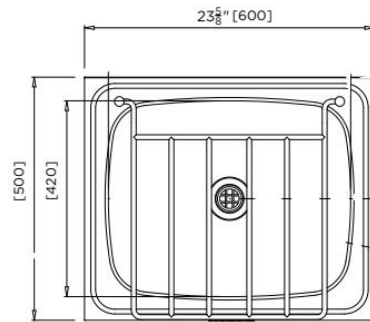
1800mm Twin Center
Universal Laboratory Sink



1800mm Twin End
Universal Laboratory Sink

Medical sink Series

Cleaners' sink



Features and benefits

Grade 304 S.S. satin finish tub

Size: 600*500*610mm

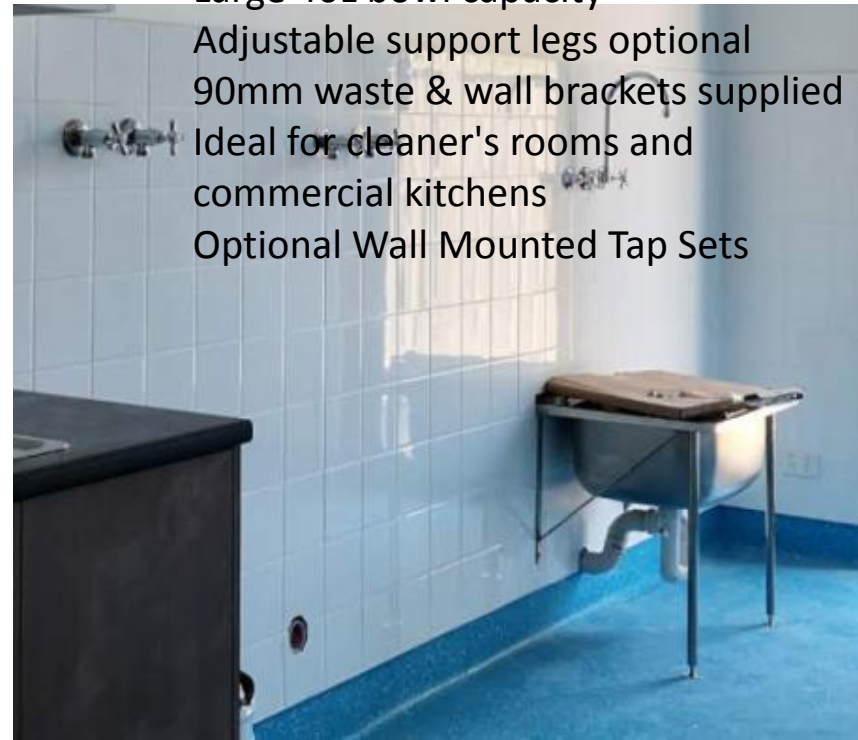
Large 46L bowl capacity

Adjustable support legs optional

90mm waste & wall brackets supplied

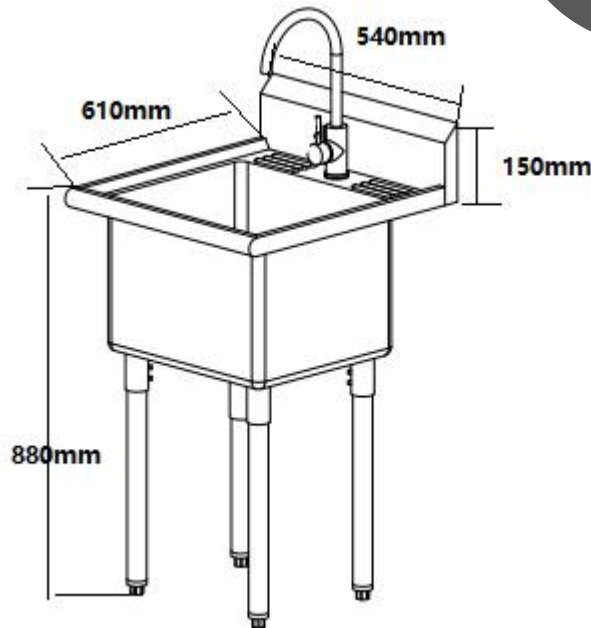
Ideal for cleaner's rooms and commercial kitchens

Optional Wall Mounted Tap Sets



Medical sink Series

Cleaners' sink



Features and benefits

Sink and legs made of 16-Gauge 304 stainless steel

Large 18 in. W x 16 in. D x 13 in. H sink bowl

Stainless steel single handle faucet with hoses included

Stainless steel strainer

Stainless steel drain assembly

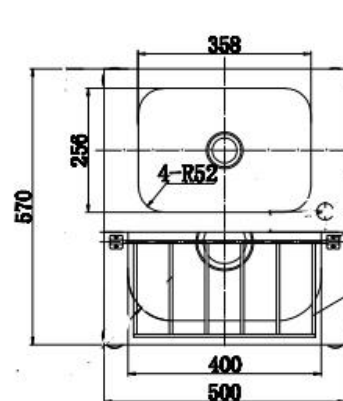
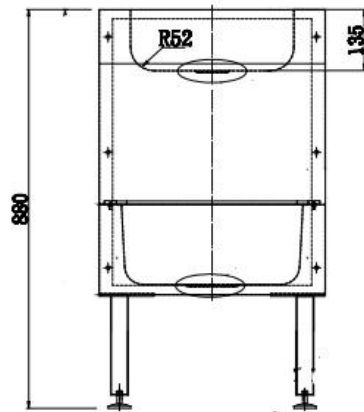
6 in. tall back splash

Adjustable feet stabilizers to keep the sink level

300 lbs. total weight capacity

Medical sink Series

Cleaners' sink



Features and benefits

- Multipurpose space-saving fixture
- Integral hand basin and bucket sink
- 12L basin / 26L sink
- Grade 304 satin S.S.
- Size: 500*570*880mm
- Only one swivel tap required
- Adjustable support legs
- Secure access hatch
- Suits swivel basin mixer (optional)

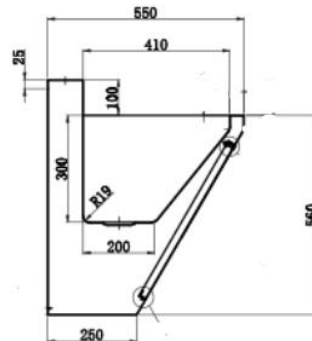
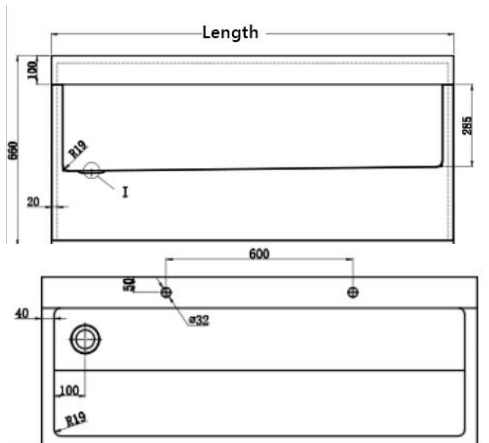
Medical sink Series

Scrub sink



Features and benefits

- Concealed waste pipe and tapware connections
- Bacteriostatic 304 or 316 stainless steel
- Hairline finished
- 90 mm waste outlet,
- suitable for use in a range of sectors.
- This easy to install, wall-mounted wash trough is supplied with all required brackets and fixing elements
- Radius internal corners for easy cleaning
- Removable front plate for easy maintenance



Standard size

- 600*550*660mm
- 1200*550*660mm
- 1800*550*660mm
- customized size

Medical sink Series

Scrub sink

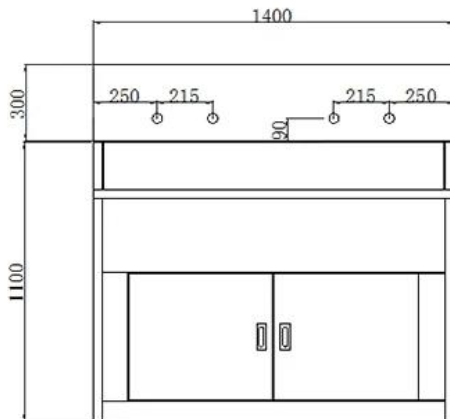


Features and benefits

- Concealed waste pipe and tapware connections
- Bacteriostatic 304 or 316 stainless steel
- Hairline finished
- 90 mm waste outlet,
- suitable for use in hospital.
- Floor standing install
- Radius internal corners for easy cleaning
- Swing front door for easy maintenance

Standard size

- 1400*550*1400mm
- 2400*550*1400mm
- customized size



Medical sink Series

Scrub sink

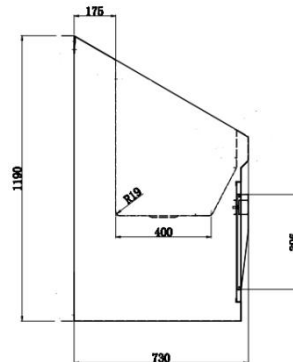
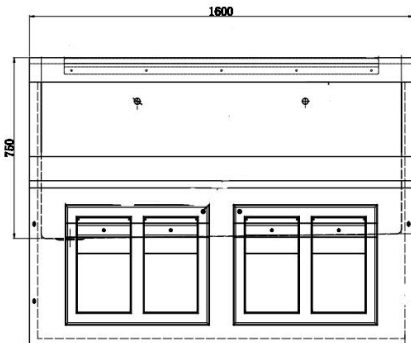


Features and benefits

- Knee operated and sensor water tap and soap dispenser long trough
- Bacteriostatic 304 or 316 stainless steel
- Hairline finished
- 90 mm waste outlet, Left or right hand waste position
- Radius internal corners - easy cleaning,
- High splash board

Standard size

- 1600*730*1190mm
- 2400*730*1190mm
- customized size



Urinal & Toilet Series

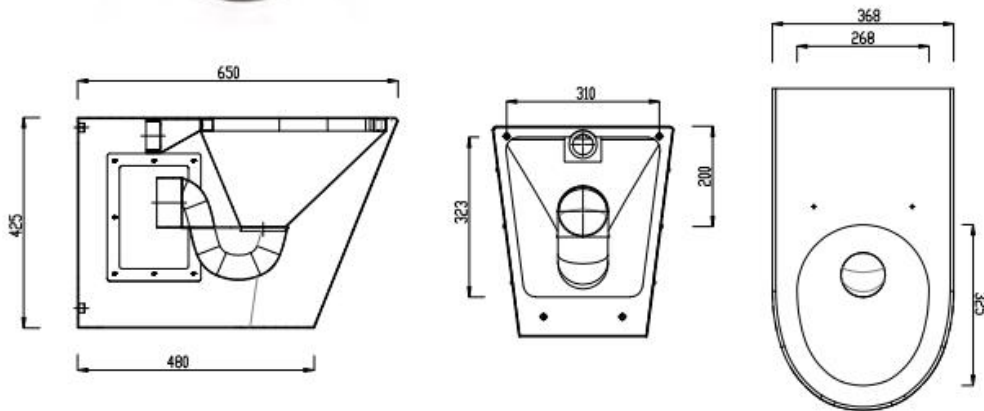
Photo

Details



PQ366

Stainless Steel Wall Hung Toilet
Bacteriostatic 304 Stainless Steel
Outer Size: 650 x 368 x 425
Thickness: Optional 1.5 / 2.0
Hairline Finished
Custom And Standard Lengths Available



- Thickness of any part can be chosen by our customers, usually no less than 1mm
- Material SS304 or SS316. using HEAVY DUTY material ONLY.
- Floor mounted, simple and stable, all accessories supplied, flushing effect is excellent
- Easy to clean
- Suitable for school, jail, mobile toilet, hospital and so on
- Customer design for SS WC Seat is warmly welcome

Urinal & Toilet Series

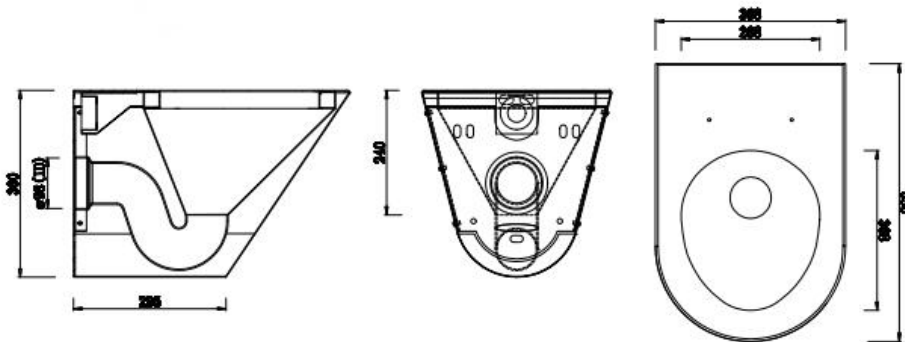
Photo

Details



PQ362

Stainless Steel Wall Hung Toilet
Bacteriostatic 304 Stainless Steel
Outer Size: 535 x 368 x 360
Thickness: Optional 1.5 / 2.0
Hairline Finished
Custom And Standard Lengths Available



- Thickness of any part can be chosen by our customers, usually no less than 1mm
- Material SS304 or SS316. using HEAVY DUTY material ONLY.
- Floor mounted, simple and stable, all accessories supplied, flushing effect is excellent
- Easy to clean
- Suitable for school,jail,mobile toilet ,hospital and so on
- Customer design for SS WC Seat is warmly welcome

Urinal & Toilet Series

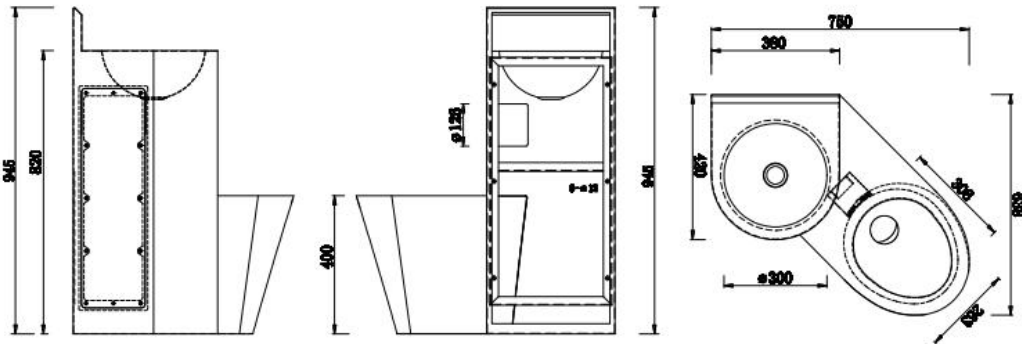
Photo

Details



PQ433

Stainless Steel Combination Toilet
Bacteriostatic 304 Stainless Steel
Outer Size: 750 x 640 x 945
Thickness: Optional 1.2 / 2.0
Hairline Finished
Custom And Standard Lengths Available



Xinhe back to wall mounted combination stainless steel WC & basins are built for installation in high security areas such as police, prison and high court cells. Supplied as standard with LH toilet roll holder but can be supplied on special indent with RH toilet roll holder or without holder. Fabricated in 1.2 and 1.6mm Type 304 stainless steel with a satin finish, the combis are supplied standard without seats but can be fitted with seat pads, specify as required. All Xinhe WC's are designed to flush with 6L of water.

Urinal & Toilet Series



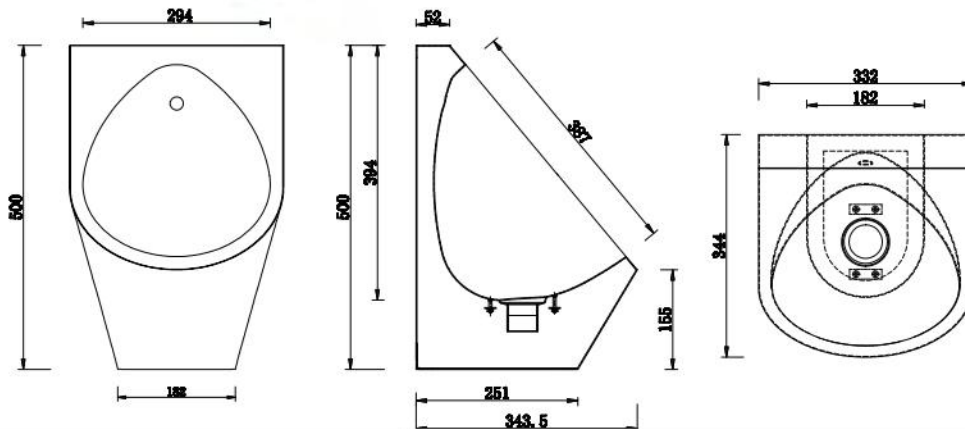
Photo

Details



PQ271

Stainless Steel Wall Hung Urinal
Bacteriostatic 304 Stainless Steel
Outer Size: 332 x 344 x 500
Thickness: Optional 1.2 / 1.5
Hairline Finished
Custom And Standard Lengths Available



Xinhe Wall hidden mural aisi 304 stainless steel urinal, satin finishing

- Stainless Steel AISI 304 Wall mounted urinal .
- Durability and resistance against corrosion.
- Satin finishing. Also available in bright polish finishing
- Designed for manual flushing system or automatic
- Provided with vandal-proof mounting system for line up in a row.

Urinal & Toilet Series

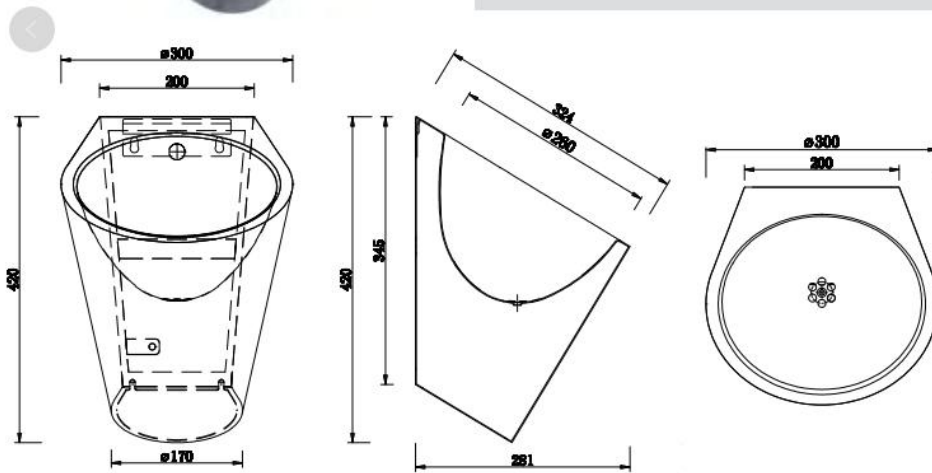
Photo

Details



PQ279

Stainless Steel Wall Hung Urinal
Bacteriostatic 304 Stainless Steel
Outer Size: 300 x 324 x 420
Thickness: Optional 1.2
Hairline Finished
Custom And Standard Lengths Available



Xinhe Wall hidden mural aisi 304 stainless steel urinal, satin finishing

- Stainless Steel AISI 304 Wall mounted urinal .
- Durability and resistance against corrosion.
- Satin finishing. Also available in bright polish finishing
- Designed for manual flushing system or automatic

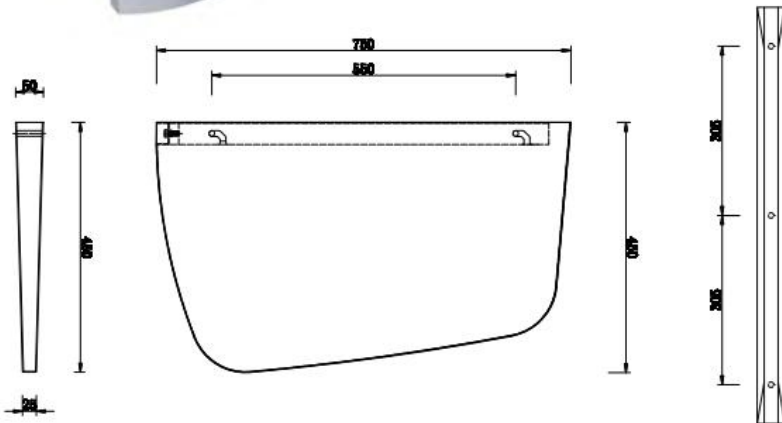
Urinal & Toilet Series

Photo

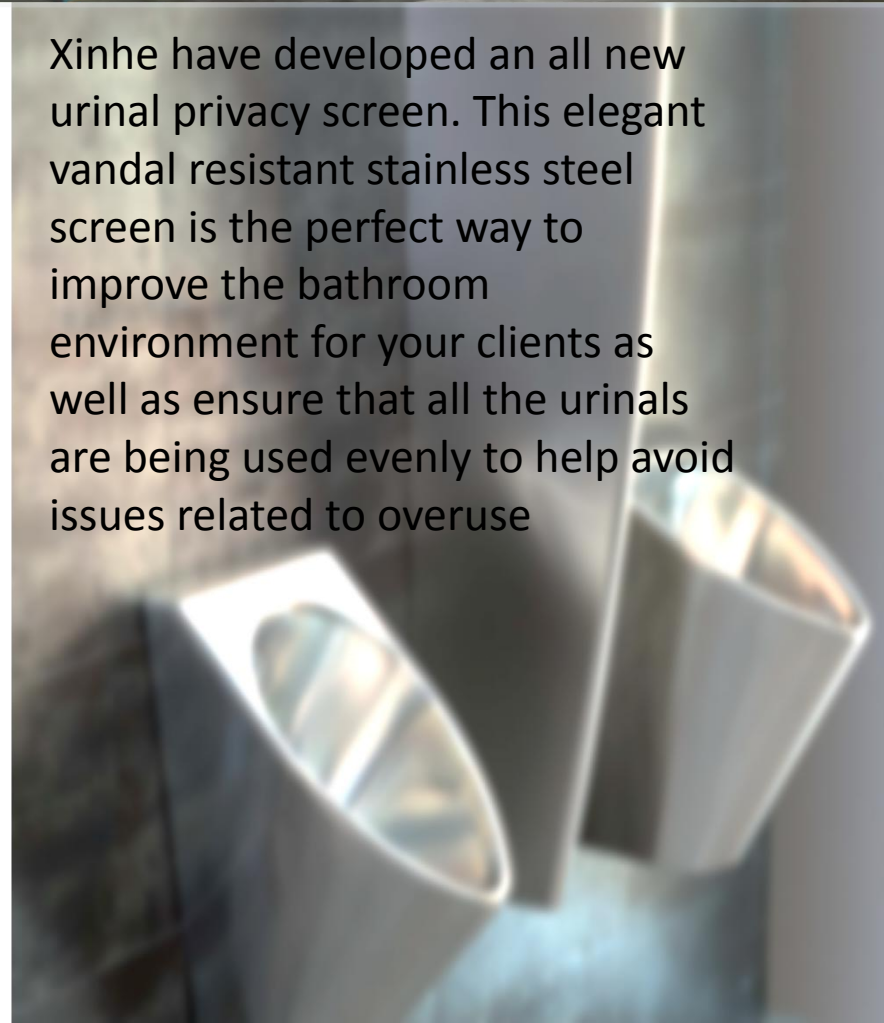


PQ413

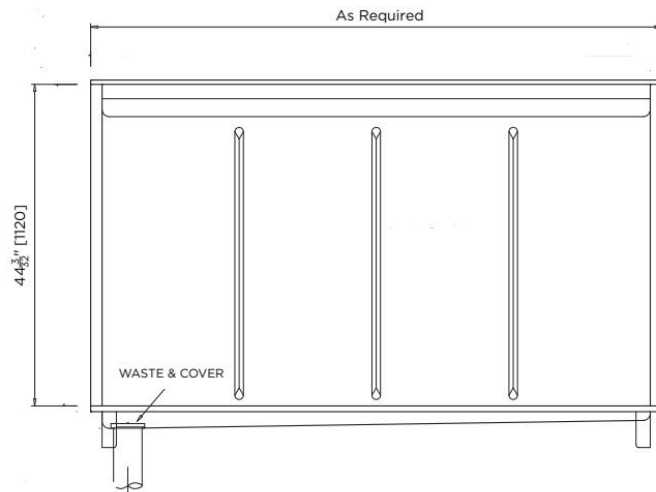
Stainless Steel Urinal Divider
Bacteriostatic 304 Stainless Steel
Outer Size: 50 x 450 x 750
Thickness: Optional 1.2 / 1.5
Hairline Finished
Custom And Standard Lengths Available



Xinhe have developed an all new urinal privacy screen. This elegant vandal resistant stainless steel screen is the perfect way to improve the bathroom environment for your clients as well as ensure that all the urinals are being used evenly to help avoid issues related to overuse



Urinal & Toilet Series



Xinhe sanistep Urinal is one of our most frequently specified stainless steel urinals.

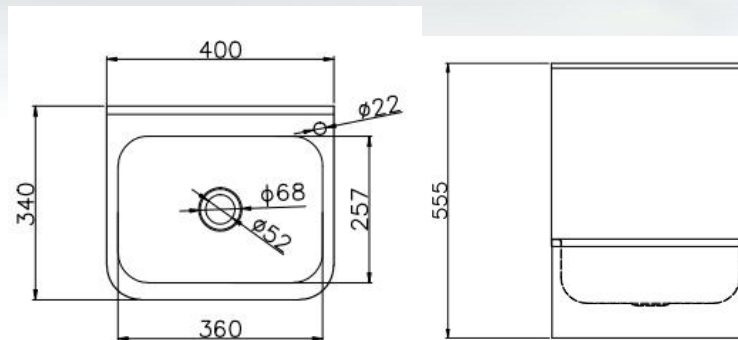
Manufactured from durable 1.2mm grade 304 stainless steel, Sanistep urinals are hand fabricated and fully welded with sturdy reinforcement to the rear, providing a sound structural finish. Sanistep urinals incorporate a hinged floor grate to allow for ease of cleaning and feature our unique weir style sparge, which enables the water to flush in an even flow with minimum water and maximum efficiency

Knee Operated sink & foot pedal sink

Photo



Drawing



Detail

Item NO.:PWB17

Material: Grade 304 satin S.S.
or Grade 316 satin S.S.

Thickness:1.2 mm

Size:400*340*555mm

Option Accessories: knee
operated system and faucet
and drainer

Wall mounted, big radius ,easy
to clean ,ideal for commercial
kitchen and hospital

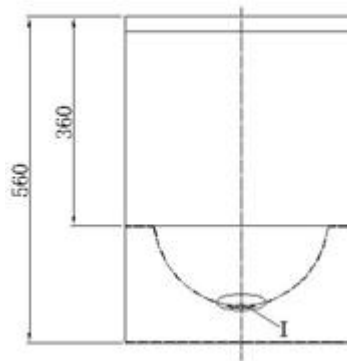
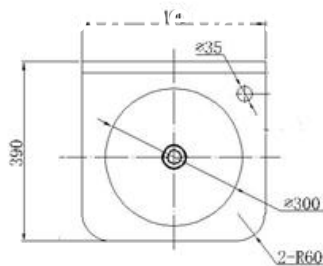
Knee Operated sink & foot pedal sink

Photo

Xin He



Drawing



Detail

Item NO.:PWB83

Material: Grade 304 satin S.S.
or Grade 316 satin S.S.

Thickness:1.2 mm

Size:400*390*560mm

Option Accessories: knee
operated system and faucet
and drainer

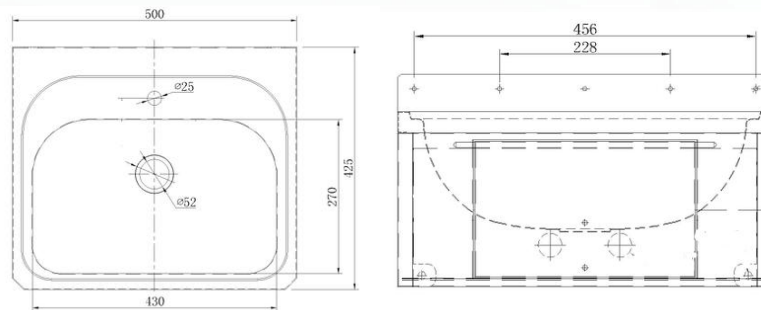
Wall mounted, big radius ,easy
to clean ,ideal for commercial
kitchen and hospital

Knee Operated sink & foot pedal sink

Photo



Drawing



Detail

Item NO.:PWB28

Material: Grade 304 satin S.S.
or Grade 316 satin S.S.

Thickness:1.2 mm

Size:500*425*283mm

Option Accessories: knee
operated system and faucet
and drainer

Wall mounted, big radius ,easy
to clean ,ideal for commercial
kitchen and hospital

Knee Operated sink & foot pedal sink

Photo



Pipe Photo



Detail

Item NO.:APWB01

Material:sink Grade 304 satin S.S. or Grade 316 satin S.S.

Thickness:1.2 mm

Size:400*400*240mm

Option Accessories: knee operated system and faucet and drainer

Wall mounted, big radius ,easy to clean ,ideal for commercial kitchen and hospital

Knee Operated sink & foot pedal sink

Photo



Features and benefits

Knee operated wash hand basin is manufactured from stainless steel - satin polish finish, material thickness 0.9 mm. Supplied complete with water spout positioned in rear right hand corner and 52 mm waste outlet. Note: The pre-mixing valve and the pipework linking the water spout to the knee operated front panel is all supplied with the washbasin. Wall mounted by fitting Screws

Knee Operated sink & foot pedal sink

Photo



Features and benefits

Foot pedal wash hand basin is manufactured from stainless steel - satin polish finish, material thickness 0.9 mm. Supplied complete with water spout positioned in the middle of rear and 52 mm waste outlet. Note: The pre-mixing valve and the pipework linking the water spout to the foot pedal bar is all supplied with the washbasin. Free standing, ideal for any space

Knee Operated sink & foot pedal sink

Photo



Features and benefits

Foot pedal wash hand basin is manufactured from stainless steel - satin polish finish, material thickness 0.9 mm. Supplied complete with water spout positioned in the middle of rear and 52 mm waste outlet. Note: The pre-mixing valve and the pipework linking the water spout to the foot pedal bar is all supplied with the washbasin. Free standing and removable, ideal for any space

Size:460*528*1042mm

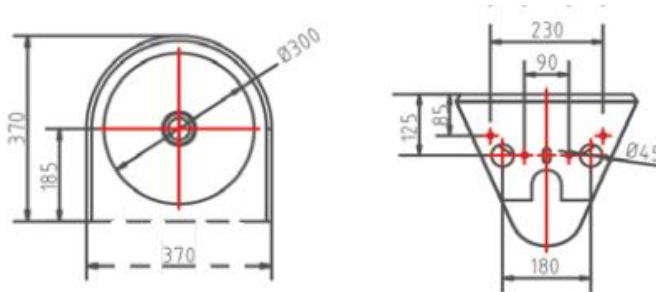
Wash Basins Series

Photo



Item Code:PWB58

Drawing



Features and benefits

A solid, fully closed, stainless steel wash basin, suitable for smaller spaces, this model has welded nuts

on the back and is mounted "through the wall" with threaded rods.

this way the mounting points are not visible or accessible for the user.

Including waste plug. Without tap hole and without overflow.

Material: Stainless steel AISI 304



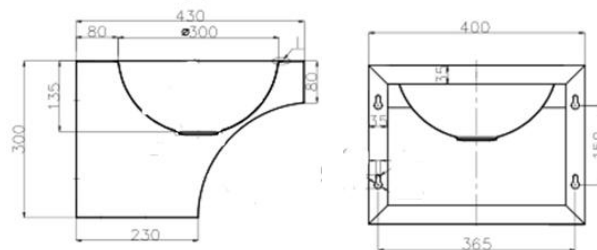
Photo

Drawing

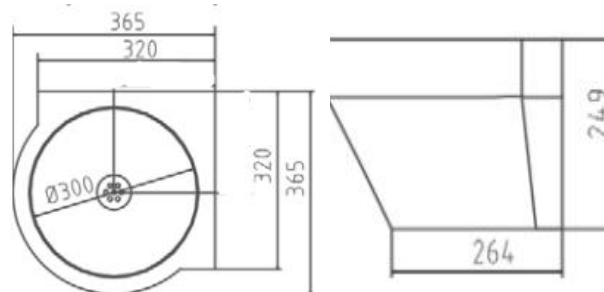
Features and benefits



Item Code:PWB03



Item Code:PWB98



A solid, fully closed execution with removable hatch at the bottom. The mounting points are not visible or accessible for the user. Material: Stainless steel AISI 304.

The solid corner wash basin with a smart design. This makes it suitable for public areas, but also for areas where there is the need for a vandal proof product. Material: Stainless steel AISI 304

Wash Basins Series

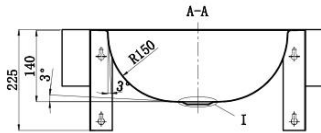
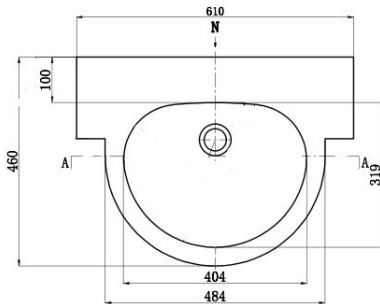
Photo

Drawing

Features and benefits



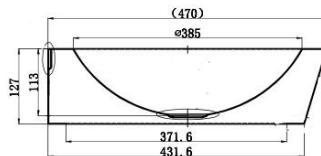
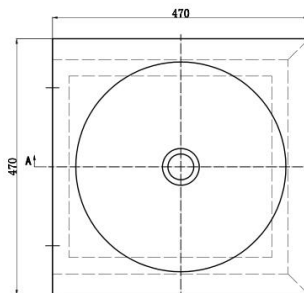
Item Code:PWB81



Basin for wall mounted in stainless steel .Supplied with waste.
Material: Stainless steel AISI 304.



Item Code:PWB02



The solid vessel wash basin with a smart design. This makes it suitable for public areas, but also for areas where there is the need for a vandal proof product. Material: Stainless steel AISI 304



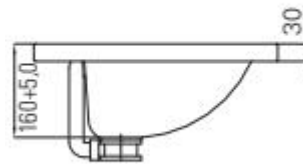
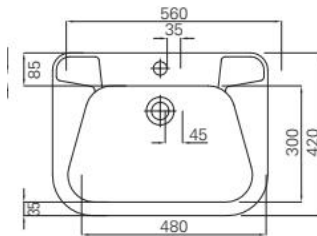
Photo

Drawing

Features and benefits



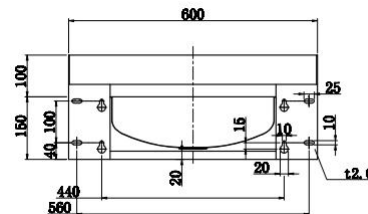
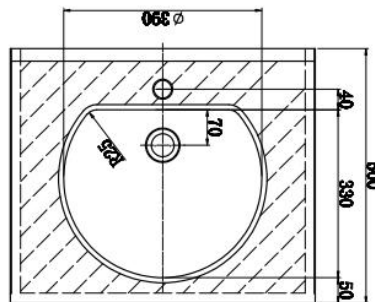
Item Code:PWB25



Basin for wall mounted in stainless steel .Supplied with brackets,waste and overflow.
Material: Stainless steel AISI 304.



Item Code:APWB01



Basin for wall mounted in stainless steel .with high splash board, waste and overflow.
Material: Stainless steel AISI 304.



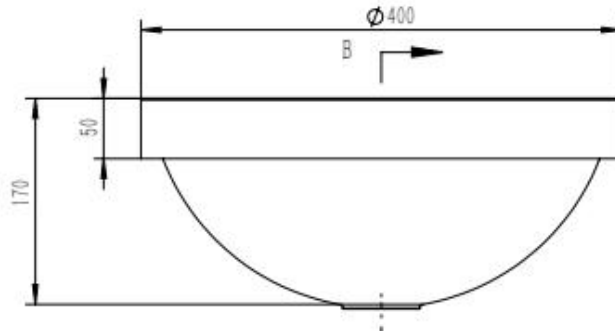
Photo



Features

- Stainless Steel AISI 304 Wall.
- Durability
- Satin finishing. With PVD colorful
- Designed for Vessel
- Dimension: $\Phi 445 \times 170 \text{ mm}$

Drawing



Item Code: APWB03





Wash Basins Series

Photo



Item Code:APWB04

Features

- Stainless Steel AISI 304 Wall.
- Durability
- Satin finishing. With PVD colorful
- Designed for Vessel
- Dimension: customized size

An appealing classic, done better. Copper color bathroom sink renews this well-loved traditional sink design. This bathroom sink is artisan crafted; forged of high-quality stainless steel.





Wash Basins Series

Photo



Item Code:APWB01

Features

- Stainless Steel AISI 304 Wall.
- Durability
- Satin finishing. With PVD colorful
- Designed for Vessel
- Dimension: customized size

An appealing classic, done better. Copper color bathroom sink renews this well-loved traditional sink design. This bathroom sink is artisan crafted; forged of high-quality stainless steel.



Hammered sink



Item Code:AH01



Perfect for sharing. Hammered Long trough is the ideal size for larger bathrooms – with plenty of room for two –you may find yourself seeking alone time just to delight in this trough bathroom sink's handcrafted beauty. Hammered Trough perfectly combines the functionality of two sinks with the beauty, style, and easy maintenance of one. Dimension: customized size!

Available Finishes:



Hammered sink



Item Code:AH02



Rectangular Hammered sink is destined to shine in new signature golden/copper. This hand-hammered sink boasts seamless construction in a single bowl, apron-front design.

The intriguing hammered steel texture is sublime; the spacious dimensions make washing up a joy. Smart hammered bathroom sink is artisan crafted; forged of high-quality stainless steel.

Dimension: customized size!

Available Finishes:



Hammered sink



Item Code:AH03



An appealing classic, done better. Smart hammered bathroom sink renews this well-loved traditional sink design. The intriguing hammered steel texture is sublime; the spacious dimensions make washing up a joy. Smart hammered bathroom sink is artisan crafted; forged of high-quality stainless steel.

Dimension:Φ445X170mm

Available Finishes:



Hammered sink



Item Code:AH04



An appealing classic, done better. Oval shape hammered bathroom sink renews this well-loved traditional sink design. The intriguing hammered steel texture is sublime; the spacious dimensions make washing up a joy. Smart hammered bathroom sink is artisan crafted; forged of high-quality stainless steel.

Dimension:450X345X152 mm

Available Finishes:



Hammered sink



Item Code:AH05



The round hammered steel texture is sublime; the spacious dimensions make washing up a joy. Smart hammered bathroom sink is artisan crafted; forged of high-quality stainless steel.

Dimension:Φ445X170mm

Available Finishes:



Hammered sink



Item Code:AH06



Perfect for a prep area or bar space, the small Prep sink boasts hand-hammered copper with seamless construction and features a living finish that will patina over time, or a sleek, unchanging stainless steel.

Dimension:353X296X150 mm

Available Finishes:

