



Jiangmen **Xinhe** Stainless Steel
Products Co.,ltd.

Secure and Durable
Stainless Steel Solutions for Correctional Facilities



ABOUT US

◆ Company introduction

Founded in 1990, Xinhe is a factory direct ODM & OEM manufacturer and supplier of stainless steel products for commercial building projects, foodservice and residential kitchens. Located in the flourishing southeast of China, Xinhe obtains the distinguishing virtues of Chinese people-fidelity, tenacity and diligence.

Xinhe consists of four production lines:

Hotel and Foodservice projects - kitchen scullery sinks, kitchen work table, cabinets, shelves, under bars, hand sinks and more.

Public projects - hospital sinks, drinking fountains, toilets, urinals, trough sinks, hand basins, benches, laboratory sinks and more.

Residential sinks – kitchen pressed sinks, kitchen handmade sinks, bathroom basins and more.

Kitchenware – mixing bowls, GN pans, draining grids and more.

Today, we have two factories, one in China, the other in Vietnam. The one located in Guangdong, China, covers an area of 23,000 m² and owns more than 300 employees, among which are 15 senior engineers serving in the R&D Department. While the other, located in Ho Chi Minh, Vietnam, was founded in 2017 and covers an area of 19,000 m². It's well worth mentioned that kitchen sinks made in our Vietnam factory are FREE FROM ANTI-DUMPING TAXES.

Due to our undying enthusiasm for chasing improvement and innovation, we have offered a wide range of premium quality products to customers all over the world, mostly North America, Europe and Australia, and have established firm and sustainable partnerships with a great number of world leading brands and competent companies.





TOILET SERIES

Prison and anti-vandal washroom/
sanitaryware require durable, tough products
with low maintenance.

Xinhe Products meet these needs cost-
effectively and on schedule. Most stainless
steel items suit high-security settings.

This section highlights proven-effective
products.

Xinhe has decades of experience supplying
secure environments (police cells, prisons,
anti-vandal solutions) in the UK and globally.

Contact us for bespoke secure-environment
requirements.



Stainless steel combination toilet



► PQ571

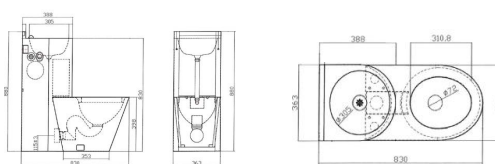
Size: 772*690*1026mm

Drainage: wall/floor drain

Surface Technology: Multi-layer brushed

Material: 304 stainless steel

Basin switch: rotary/button



► PQ700

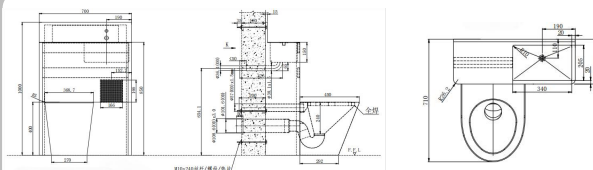
Size: 700 x 710 x 1000mm

Drainage: wall/floor drain

Surface Technology: Multi-layer brushed

Material: 304 stainless steel

Basin switch: rotary/button



► PQ433

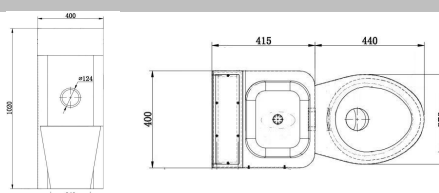
Size: 400*340*1000mm

Drainage: wall/floor drain

Surface Technology: Multi-layer brushed

Material: 304 stainless steel

Basin switch: rotary/button



Stainless steel combination toilet



► PQ433

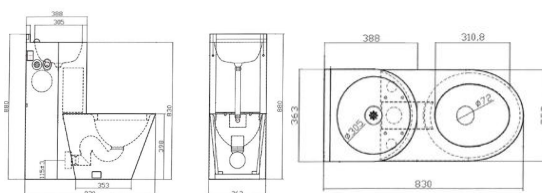
Size: 855*373*970mm

Drainage: wall/floor drain

Surface Technology: Multi-layer brushed

Material: 304 stainless steel

Basin switch: rotary/button



► PQ8816

Size: 855*373*970mm

Drainage: wall/floor drain

Surface Technology: Multi-layer brushed

Material: 304 stainless steel

Basin switch: rotary/button



► PQ216

Size: 865*455*928mm

Drainage: wall/floor drain

Surface Technology: Multi-layer brushed

Material: 304 stainless steel

Basin switch: rotary/button



► PQ301

Size: 963*855*955mm

Drainage: wall/floor drain

Surface Technology: Multi-layer brushed

Material: 304 stainless steel

Basin switch: rotary/button



► PQ639

Size: 368*960*1026mm

Drainage: wall/floor drain

Surface Technology: Multi-layer brushed

Material: 304 stainless steel

Basin switch: rotary/button

Stainless steel toilet



► PQ366

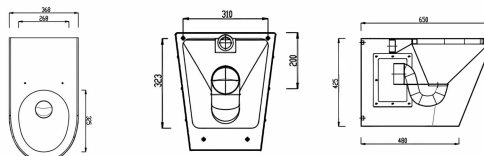
Size:650*368*425mm

Material:304 stainless steel

Drainage:Floor/Wall Drainage

Optional for pp toilet cover, stainless steel toilet cover

Optional for flush valves or concealed wall hung cistern



► PQ603

Size:700*368*360mm

Material:304 stainless steel

Drainage:Floor/Wall Drainage



► PQ606

Size:700*368*500mm

Material:304 stainless steel

Drainage:Floor/Wall Drainage



► PQ607

Size:680*368*400mm

Material:304 stainless steel

Drainage:Floor/Wall Drainage



► PQ450

Size:450*355*390mm

Material:304 stainless steel+Silicon Shell

Drainage:Floor/Wall Drainage



SQUATTING PANSERIES

Anti-vandal sanitary products are mainly used in prison settings.

They are made of stainless steel with a relatively thick structure, which enhances their impact resistance. Research has shown that they can reduce the risk of injury and suicide. We provide faucet solutions suitable for various locations and usage scenarios.

Anti-vandal products have proven their worth around the world for many years and are very popular in prisons. Stainless steel is especially recommended for places where vandalism is a concern. This alloy has great mechanical strength



Stainless steel squat toilet pan



► PQ8826

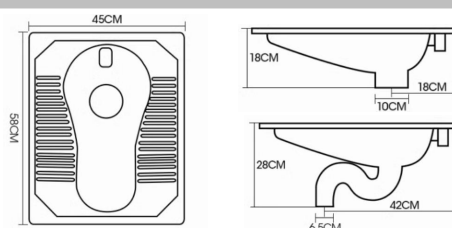
Size: 450*580mm

Material: SUS304 stainless steel

Thickness: 1.0mm

Surface treatment: Bowl polish, squat toilet pan top brush Optional for different hand push flush valves and sensor flush valves Siphon pipe is available .

All the squat toilet pan can be equip with cistern and water inlet pipe



► PQ434

Size: 700*228mm

Material: SUS304 stainless steel

Thickness: 1.2mm

Installation: In-ground installation



► PQ8827

Size: 450*580mm

Material: SUS304 stainless steel

Thickness: 1.0mm

Installation: In-ground installation



► PQ8828S

Size: 585*625mm

Material: SUS304 stainless steel+Silicon Shell

Thickness: 1.0mm

Installation: In-ground installation



► PQ600

Size: 600*500*187mm

Material: SUS304 stainless steel

Thickness: 1.2mm

Installation: In-ground installation



WASH BASIN SERIES

This series of stainless steel washbasins, custom - made for prisons and detention centers, set new safety standards with innovative designs and excellent performance. Installed in - ground, they stay firmly in place, removing displacement risks.

Crafted with multiple brushing layers, the surface has a wear - resistant protective layer, resisting scratches and chemical erosion, and is easy to clean. The basin's fluid - mechanics - inspired design creates an inclined surface, preventing ropes from tangling and eliminating self - harm and harm - to - others risks through its physical structure.

Its smooth, curved surface ensures no hard - to - clean spots, allowing for thorough cleaning and disinfection.



Security grade sanitary wares



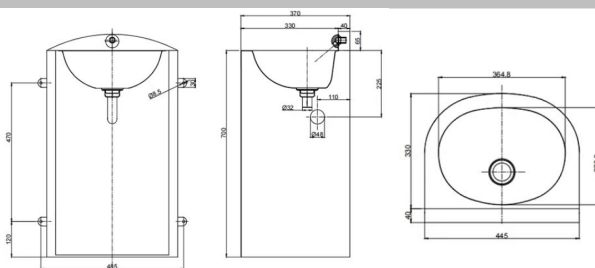
► PWB7048

Size: 700*485*370mm

Material: SUS304 stainless steel

Thickness:1.0mm

Surface treatment: Bowl polish, squat toilet pan top brush
Optional for different hand push flush valves and sensor flush valves
Siphon pipe is available .



► PWB8245-A

Size: 480*420*765mm

Material: SUS 304 stainless steel

Thickness:1.0mm

Installation:In-ground installation



► PWB8246-A

Size: 480*420*765mm

Material: SUS 304 stainless steel

Thickness:1.0mm

Installation:In-ground installation



► PWB8215

Size: 425*460*700mm

Material: SUS 304 stainless steel

Thickness:1.0mm

Installation:In-ground installation



► PWB8296-A

Size: 480*410*300mm

Material: SUS 304 stainless steel

Thickness:1.0mm

Installation:In-ground installation

Security grade sanitary wares



► PWB104

Size: 400*340*300mm
Material: SUS304 stainless steel
Thickness:1.2mm
Installation:In-ground installation



► PWB76

Size: 410*395*287mm
Material: SUS304 stainless steel
Thickness:1.2mm
Installation:In-ground installation



► PWB163

Size: 570*340*300mm
Material: SUS304 stainless steel+Silicon Shell
Thickness:1.2mm
Installation:In-ground installation



► PWB8297-B

Size: 523*410*150mm
Material: SUS 304 stainless steel+Silicon Shell
Thickness:1.0mm
Installation:In-ground installation



► PWB8298-C

Size: 320*320*400mm
Material: SUS 304 stainless steel
Thickness:1.0mm
Installation:In-ground installation



► PWB8230

Size: 500*410*135mm
Material: SUS 304 stainless steel
Thickness:1.0mm
Installation:In-ground installation



► PWB8040

Size: 800*400*245mm
Material: SUS304 stainless steel
Thickness:1.0mm
Installation:In-ground installation



Silicone SERIES

We specialize in providing secure, efficient procurement for stainless steel bathroom systems in prisons and high - security facilities. Our product line, including faucets, shower trays, and handrails, meets the strict safety and durability demands of such environments.

Made from high - strength stainless steel with multi - layer brushed treatment, our products resist wear, corrosion, and stains. Designs incorporate physical hazard prevention features like anti - tangle shapes, rounded edges, and seamless builds to eliminate risks without complex electronics.

With our one - stop procurement model, our team handles everything from selection and custom design to installation and support. This simplifies the process, cuts costs, and helps create a safe, hygienic prison bathroom. Choose us for top - notch security and procurement efficiency.



Silicone Wash Sink



SP8241

Size: 375*375*270mm
Material: silicone safety
Thickness:1.0mm



SP7960

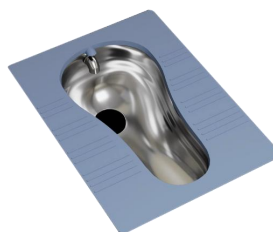
Size: 790*460*360mm
Material: silicone safety
Thickness:1.0mm

Silicone Wash Sink



SP5440

Size: 540*405*390mm
Material: silicone safety
Thickness:1.0mm



SP8826

Size: 605*455mm
Material: silicone safety
Thickness:1.0mm



SP7233

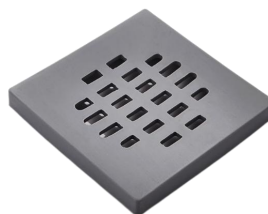
Size: 728*335*235mm
Material: silicone safety
Thickness:1.0mm

Silicone floor drain



SP9893

Size: 98*98*94mm
Material: silicone safety
Thickness:1.0mm



SP9894

Size: 98*98*94mm
Material: silicone safety
Thickness:1.0mm

Silicone Faucet



SP2419

Size: 270*190*74mm
Material: silicone safety
Thickness:1.0mm



SP2951

Size: 290*150*74mm
Material: silicone safety
Thickness:1.0mm



OTHERS SERIES

Our silicone product series, developed specifically for prisons, provides reliable solutions emphasizing safety, durability, and manageability. Made of non-toxic silicone, these products have passed strict safety tests, safeguarding inmates and staff from health risks.

The series covers bathroom items like toilets, washbasins, and floor drains, along with silicone tableware. Flexible yet unbreakable, with rounded edges, they can't be used as weapons. These products endure high temperatures and impacts, staying intact without shattering.

Silicone's smooth surface resists stains, facilitating cleaning and disinfection. This helps prevent bacterial growth, meeting prisons' high hygiene requirements.



Others series products

Shower basin



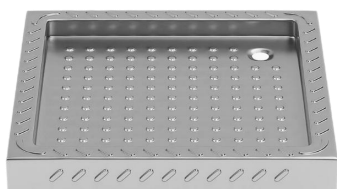
PQ489

Size: 900*900*114 mm
Material: SUS 304
Thickness: 1.2mm



PQ8080

Size: 800*800*115 mm
Material: SUS 304
Thickness: 1.2mm



PQ7095

Size: 700*700*950mm / 750*750*950mm / 800*800*115mm
Material: SUS 304
Thickness: 1.2mm

Floor drain



FB2512

Size: 125*120 mm
Material: SUS 304
Thickness: 1.2mm
Suitable diameter: 50/70mm



FB2012

Size: 200*125 mm
Material: SUS 304
Thickness: 1.2mm
Suitable diameter: 50/70mm

Faucet



FC2415

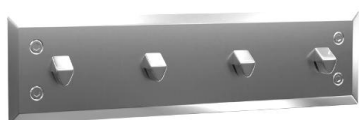
Size: 240*150 mm
Material: SUS 304
Thickness: 1.0mm



FC1515

Size: 150*150mm
Material: SUS 304
Thickness: 1.0mm

Towel rack



TR4525

Size: 125*120 mm
200*125 mm
455*125 mm
Material: SUS 304
Thickness: 1.0mm

Water dispenser



WD4525

Size: 250*155*320mm
Material: SUS 304
Thickness: 1.0mm

Others series products

Shower basin



GC179

Size: 300/400/500*60mm
Material: SUS 304
Thickness: 1.2mm



GC178

Size: 740.8*75mm
Material: SUS 304
Thickness: 5.0/2.0mm



GC180

Size: Customizable
Material: SUS 304
Thickness: 1.2mm

Floor drain



FB2512

Size: 125*120 mm
Material: SUS 304
Thickness: 1.2mm
Suitable diameter: 50/70mm



FB2012

Size: 200*125 mm
Material: SUS 304
Thickness: 1.2mm
Suitable diameter: 50/70mm

Faucet



FC2415

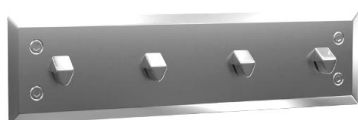
Size: 240*150 mm
Material: SUS 304
Thickness: 1.0mm



FC1515

Size: 150*150mm
Material: SUS 304
Thickness: 1.0mm

Towel rack



TR4525

Size: 125*120 mm
200*125 mm
455*125 mm
Material: SUS 304
Thickness: 1.0mm

Water dispenser



WD4525

Size: 250*155*320mm
Material: SUS 304
Thickness: 1.0mm

Mirror



P324

Size: 500*500mm
Material: SUS316
Thickness:1.5mm



P325

Size: 500*400mm
Material: SUS316
Thickness:1.5mm



P326

Size: 400*400MM
Material: SUS 304
Thickness:1.2mm

Trash Can



PQ834

Size: 458*200*600mm
Material: SUS 304
Thickness:1.2mm



PQ423

Size: 240*150*650mm
Material: SUS 304
Thickness:1.0mm



PQ397

Size: 400*300*550mm
Material: SUS 304
Thickness:1.0mm
Suitable diameter:50/70mm



PQ241

Size: 400*400*465mm
Material: SUS 304
Thickness:1.5mm



PQ252

Size: 300*405mm
Material: SUS 304
Thickness:1.0mm
Suitable diameter:50/70mm



Fairness · Humility · Courage
Creating a Better Life with Stainless Steel